

Somerset ICS Functions and Decisions Map

Strategic leadership

Health and Wellbeing Board
Established by the Local Authority.
Provides shared leadership for the local health and wellbeing system, to improve health and reduce inequalities. The Board has responsibility over all influences of health and wellbeing including health and care services as well as the wider determinants of health. Underpinned by a joint health and wellbeing strategy, 'Improving Lives'.

Integrated Care Partnership (ICP)
A committee jointly established by the ICB and the Local Authority. Responsible for developing an integrated care strategy that meets the assessed needs of the Somerset population and are met by the exercise of functions of the ICB, Local Authority and NHS England. ICP Strategy will be "Fit for my Future".

Somerset Assurance Forum (SAF)
Operates as a single forum for the Somerset ICS (with NHSEI) to obtain assurance against the System Oversight Framework (SOF) and system issues and performance.

Somerset System Groups
Hosted as a committees of the ICB Board.

Integrated Care Board (ICB)
A Unitary Board.
Responsible for arranging for the provision of health services for its population. Functions of ICB need to meet the assessed needs of the population, as informed by the ICP Strategy.

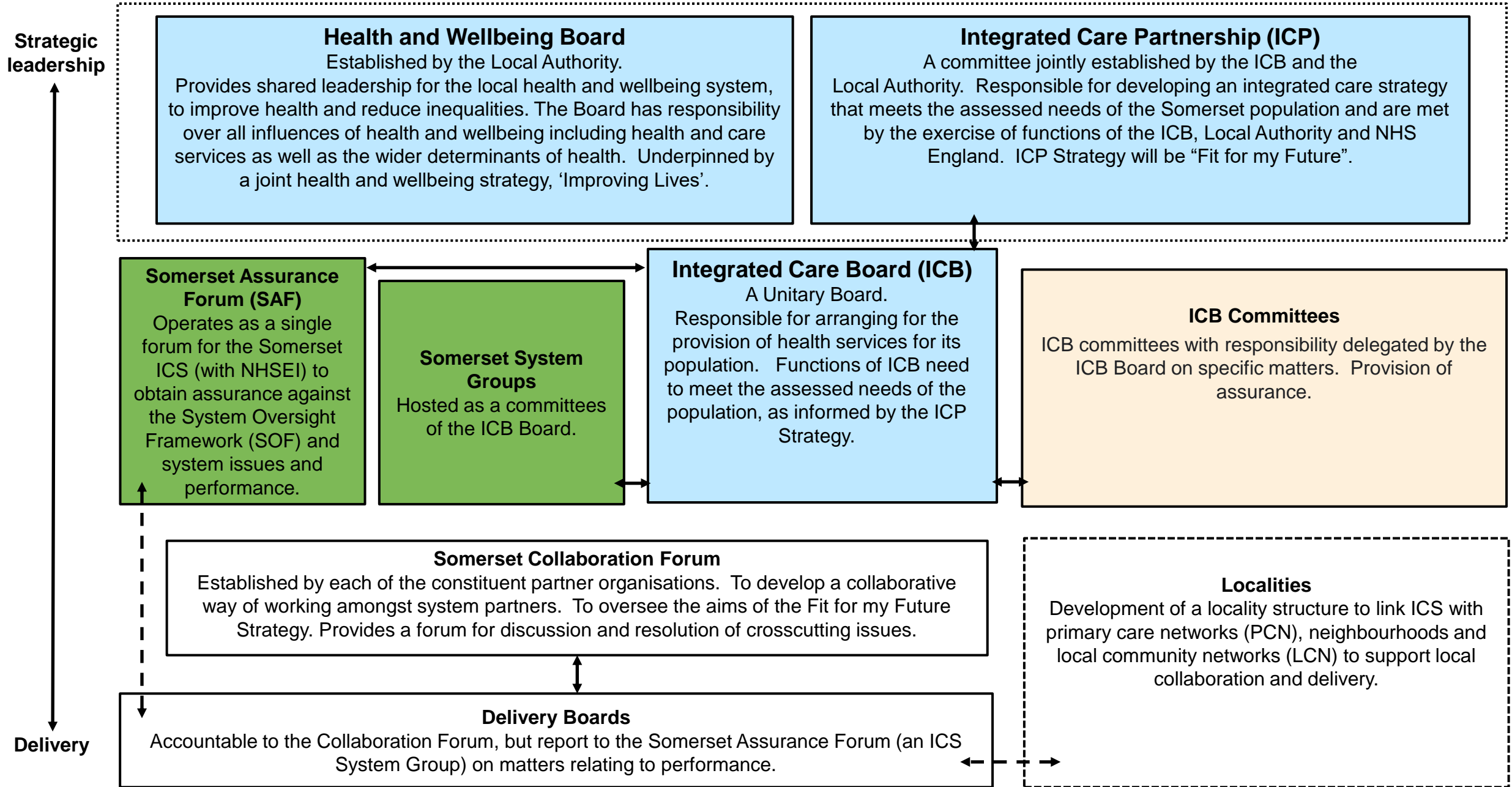
ICB Committees
ICB committees with responsibility delegated by the ICB Board on specific matters. Provision of assurance.

Somerset Collaboration Forum
Established by each of the constituent partner organisations. To develop a collaborative way of working amongst system partners. To oversee the aims of the Fit for my Future Strategy. Provides a forum for discussion and resolution of crosscutting issues.

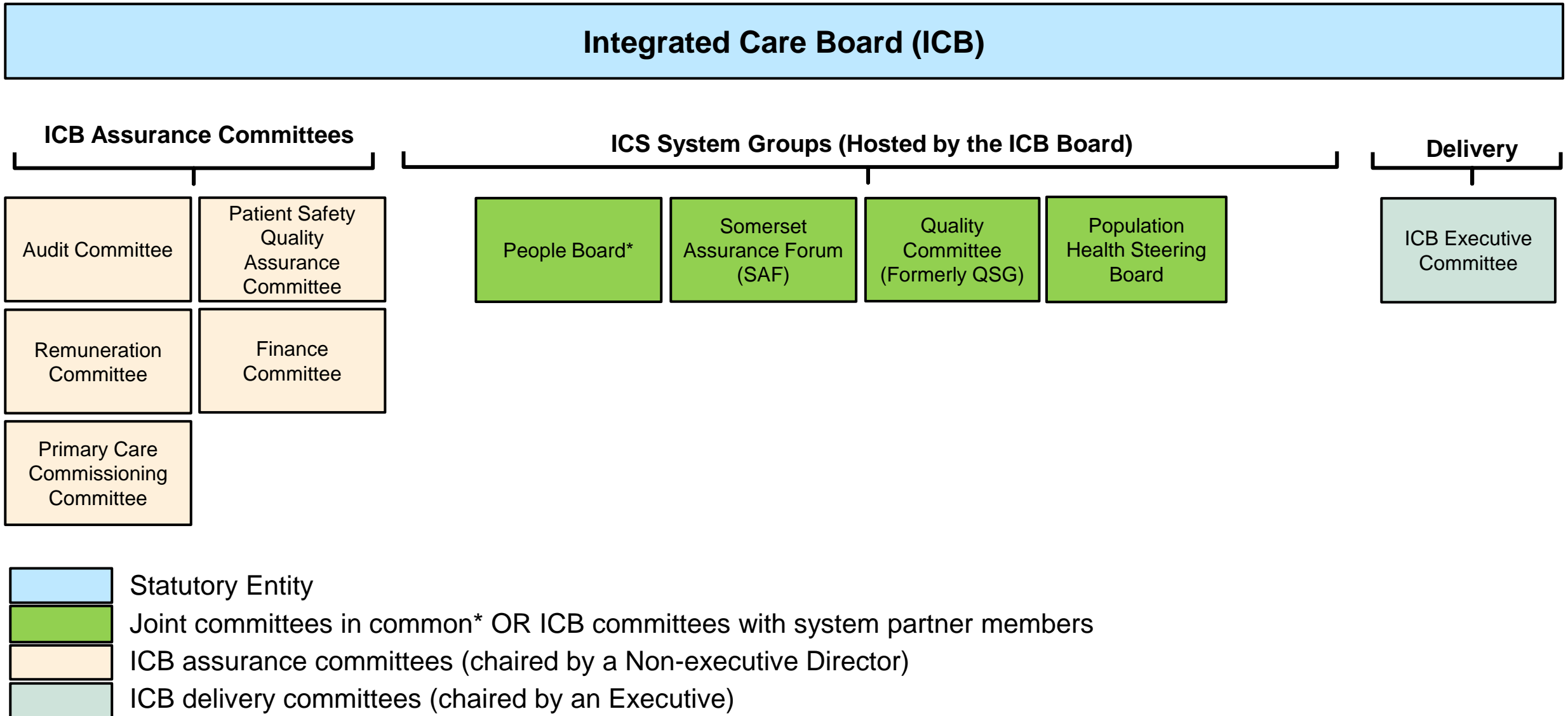
Localities
Development of a locality structure to link ICS with primary care networks (PCN), neighbourhoods and local community networks (LCN) to support local collaboration and delivery.

Delivery Boards
Accountable to the Collaboration Forum, but report to the Somerset Assurance Forum (an ICS System Group) on matters relating to performance.

Delivery



ICB Board Committee Structure



NB: In development in response to ongoing feedback from soft engagement