

**Report to the NHS Somerset Clinical Commissioning Group on 26 November 2020**

<b>Title: COVID-19 Update</b>	<b>Enclosure E</b>
-------------------------------	--------------------

Version Number / Status:	N/A
Executive Lead	James Rimmer, Chief Executive
Clinical Lead:	Trudi Grant, Director of Public Health
Author:	James Rimmer, Chief Executive

**Summary and Purpose of Paper**

This paper sets out the latest published data (19 November 2020) for the COVID-19 pandemic as produced by Somerset County Council's Public Health Team. It shows that in Somerset there have been:

- 4404 lab-confirmed COVID-19 cases
- 219 certified deaths (as of 6 November 2020)
- 131.6 cases per 100,000 population in the last 7 days
- The Somerset R number range as of 19 November 2020 was 1.2 to 1.4, the same as for the south west as a whole
- The UK R number range at 19 November was 1.0-1.2

The Director of Public Health will present the very latest information at the meeting on 26 November 2020.

**Recommendations and next steps**

The Governing Body is asked to **Note** the COVID-19 update.

**Impact Assessments – key issues identified**

<b>Equality</b>	Equality and Diversity is considered in focusing planning on vulnerable groups who may be at risk from the pandemic.
<b>Quality</b>	A key principle of EPPR planning is ensure that controls and assurances that are in place to manage the identified community risks and to minimise disruption and maintain the quality of services as far as possible.
<b>Privacy</b>	All partner agencies in Somerset are signatories to the Somerset Information Sharing Protocol. There was a specific cell concentrating on data protection and information sharing.
<b>Engagement</b>	There has been broad communication and engagement with partners and local groups over the course of the pandemic response.

<b>Financial / Resource</b>	Resources have been identified within the CCG budget for emergency planning and business continuity. Additional resources have been allocated to support the pandemic response			
<b>Governance or Legal</b>	The CCG's Legal duties in relation to Emergency Preparedness Resilience and Response (EPRR) are set out in section 4 of the Emergency Planning and Resilience Policy.			
<b>Risk Description</b>	Risks associated with the incident have been captured on a CoVid-19 risk register and also on the Corporate Risk Register (Datix refs 386, 390, 406, 427,428)			
<b>Risk Rating</b>	<b>CoVid-19 Corporate Risk</b>	<b>Consequence</b>	<b>Likelihood</b>	<b>RAG Rating</b>
	Increased demand for mental health services (ref 406)	4	4	16
	Risk of nosocomial transmission (ref 428)	5	3	15
	Personal Protection Equipment (PPE) - protection & prevention (ref 386)	3	4	12
	Clinical safety (ref 390)	3	4	12
	CAMHS Access rate (ref 427)	3	4	12

## Detected cases



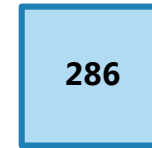
## Outbreaks, Situations and Single Cases being managed



Open



Surveillance

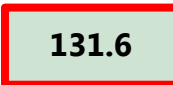


Closed

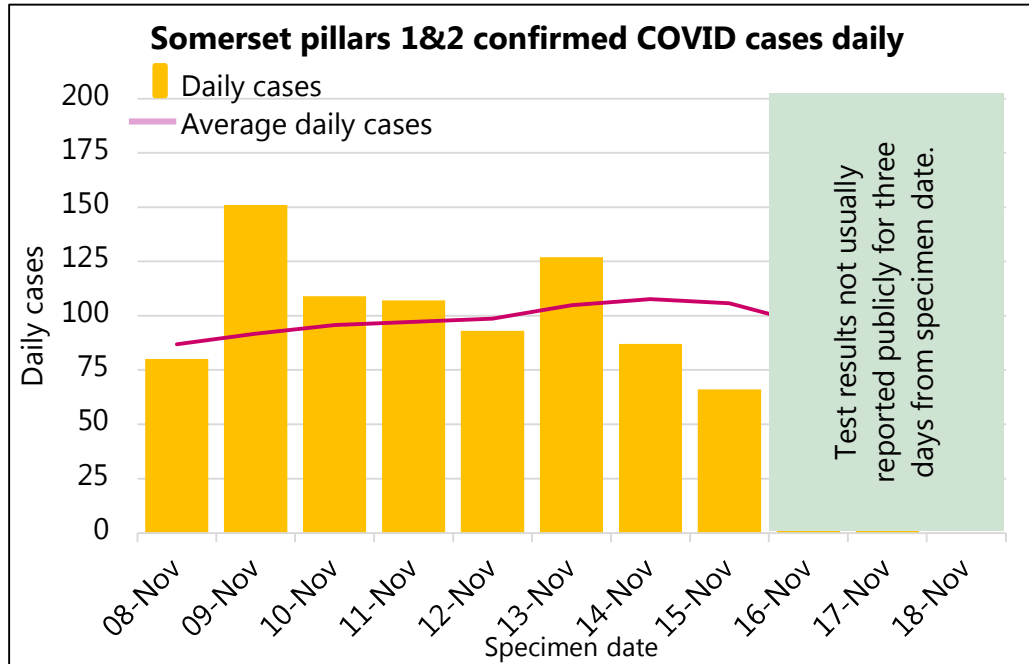


## Latest 7 day rate per 100k

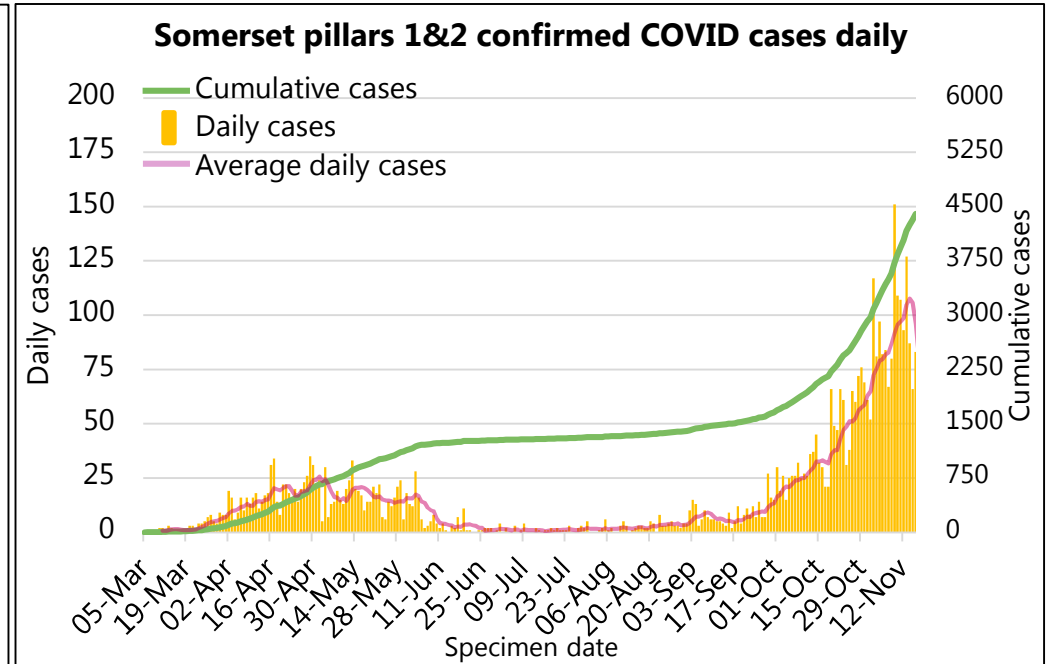
09-Nov to 15-Nov



## Most recent days of cases



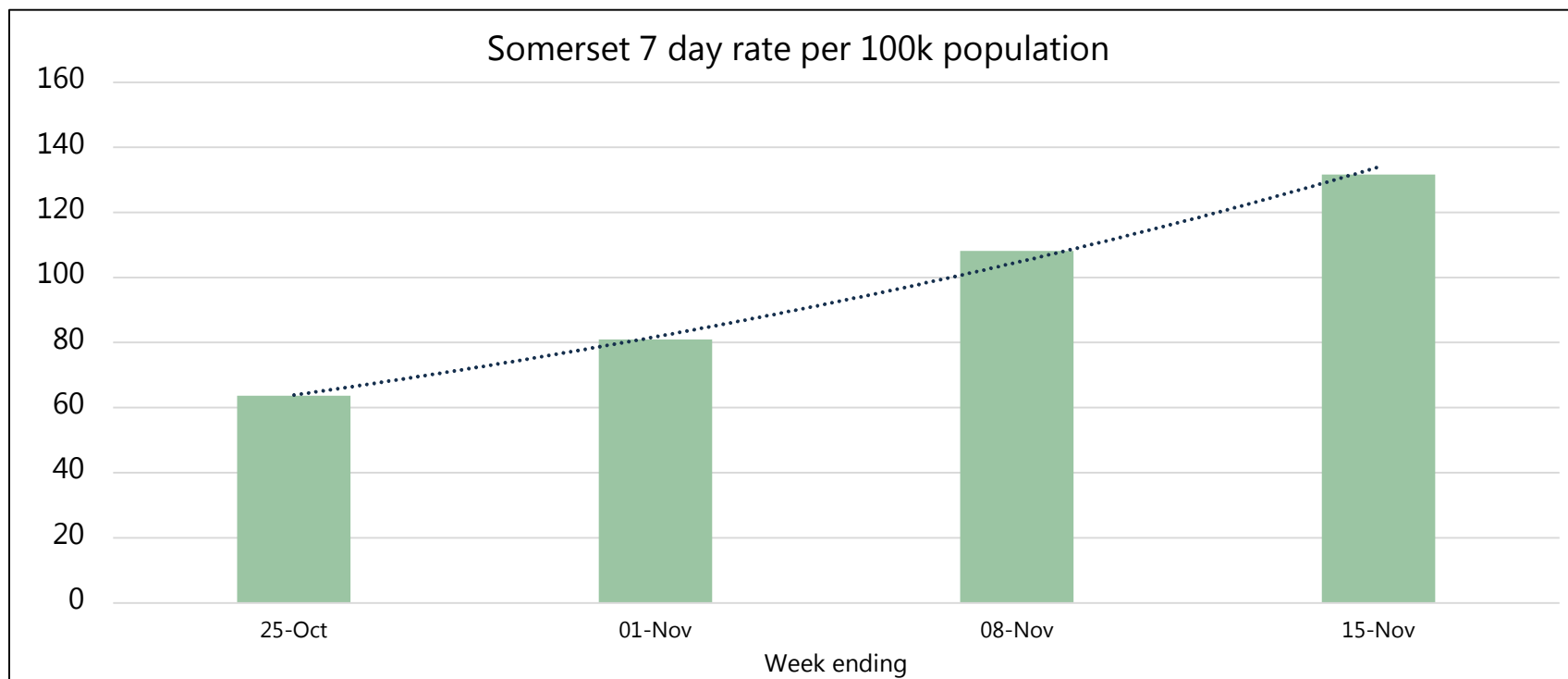
## Overall profile of the epidemic in Somerset



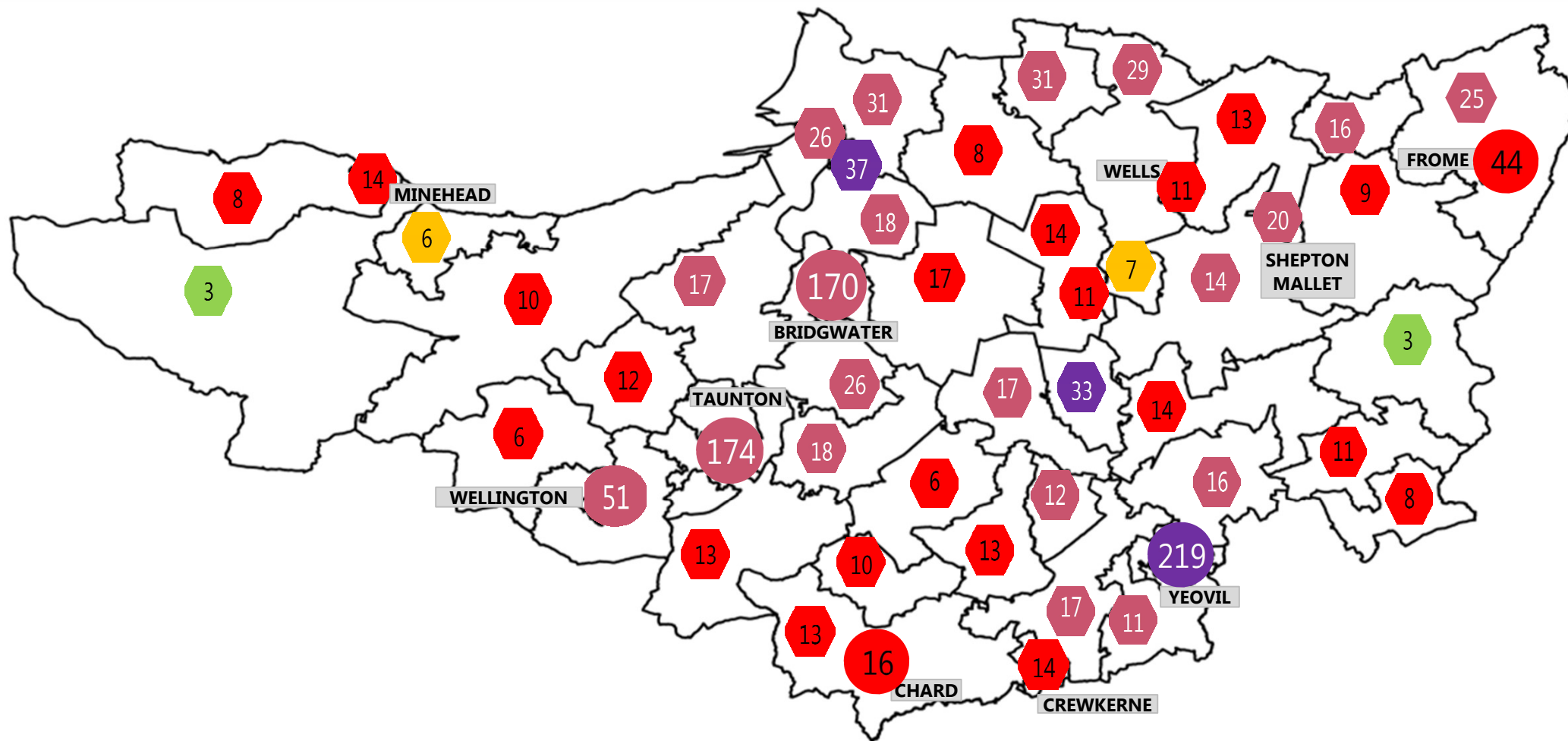
# Somerset COVID-19 Local Outbreak Management Plan Dashboard

## Weekly cases (excludes most recent three days with incompletely reported results)

District	19-Oct to 25-Oct	7 day rate per 100k	26-Oct to 01-Nov	7 day rate per 100k	02-Nov to 08-Nov	7 day rate per 100k	09-Nov to 15-Nov	7 day rate per 100k
Mendip	46	39.8	76	65.8	102	88.2	111	96.0
Sedgemoor	132	107.2	145	117.7	173	140.4	208	168.9
Som W & Taun.	115	74.1	116	74.8	153	98.6	162	104.4
Sth Somerset	65	38.6	118	70.1	180	106.9	259	153.9
<b>Somerset</b>	358	<b>63.7</b>	455	<b>80.9</b>	608	<b>108.1</b>	740	<b>131.6</b>



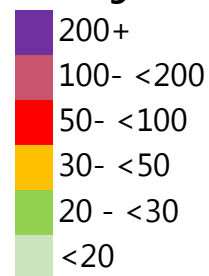
# Somerset COVID-19 Local Outbreak Management Plan Dashboard



Date range 02-Nov to 15-Nov

The numbers in this map show the current cases in that area in the past 14 days, the colour of the tag shows the equivalent rate of positive cases per 100,000 population over a 7 day period, averaged over the past 14 days. Case numbers in Taunton, Wellington, Chard, Yeovil, Bridgwater and Frome have been combined across the urban area with rates based on the combined area population.

### Average weekly rate per 100k



# Somerset COVID-19 Local Outbreak Management Plan Dashboard

## Latest R number range for the South West

# 1.2-1.4

Last updated on Friday 13 Nov 2020

Produced by:

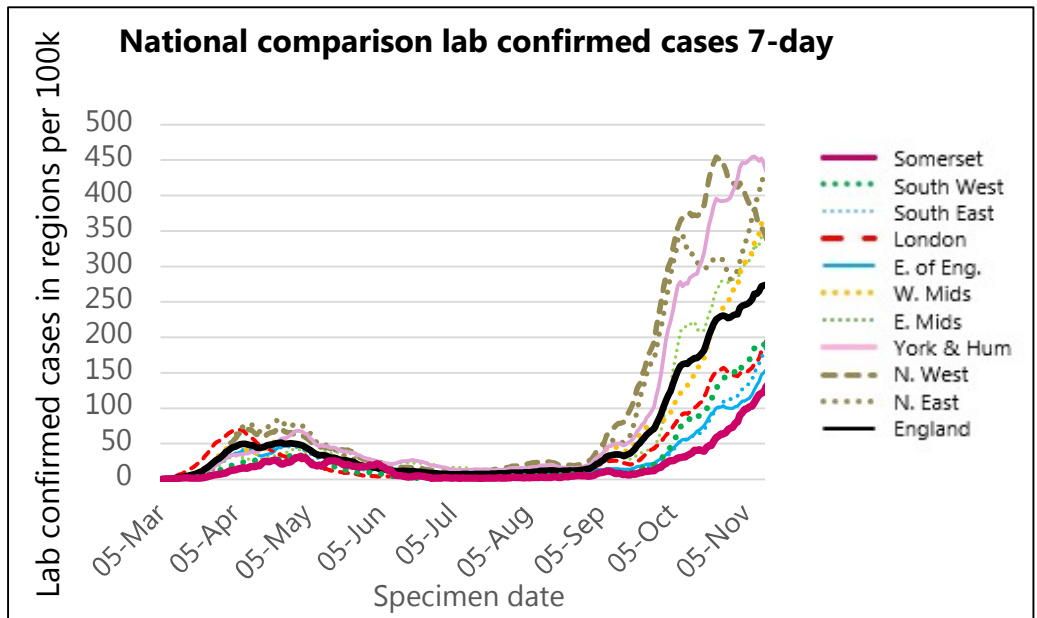
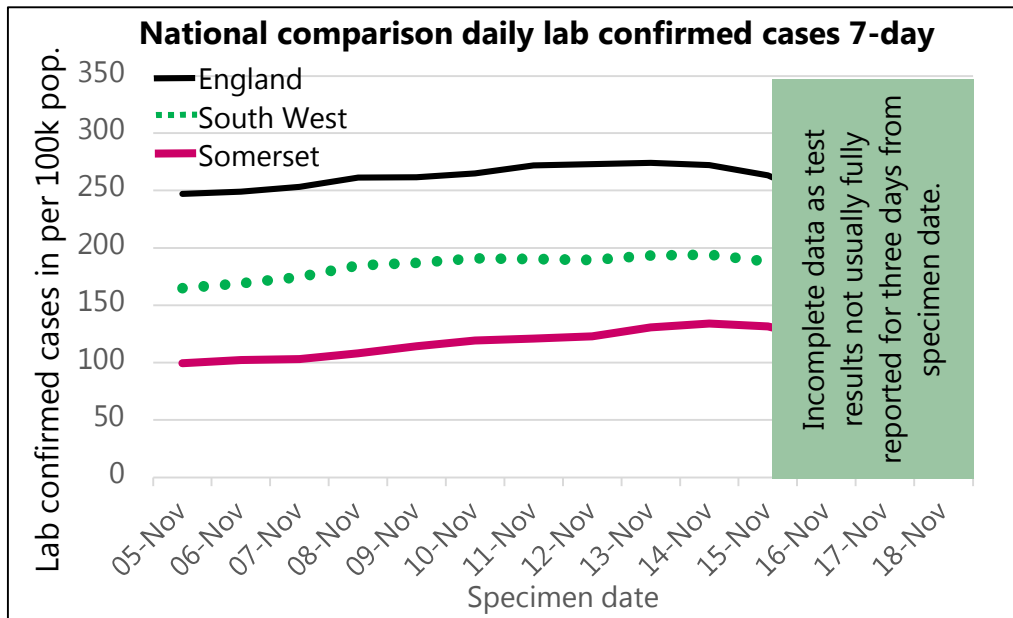
UK Government Scientific Advisory Group for Emergencies (SAGE)

## What is R?

The reproduction number (R) is the average number of secondary infections produced by 1 infected person.

An R number of 1 means that on average every person who is infected will infect 1 other person, meaning the total number of new infections is stable.

Region	R
UK	1.0-1.2
England	1.1-1.2
East of England	1.1-1.4
London	1.0-1.2
Midlands	1.1-1.3
NE and Yorks	1.0-1.2
North West	0.9-1.1
South East	1.2-1.4
South West	1.2-1.4



# Somerset COVID-19 Local Outbreak Management Plan Dashboard

COVID deaths week ending

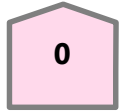
📅 06/11/2020

All COVID

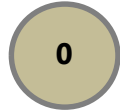
Hospital



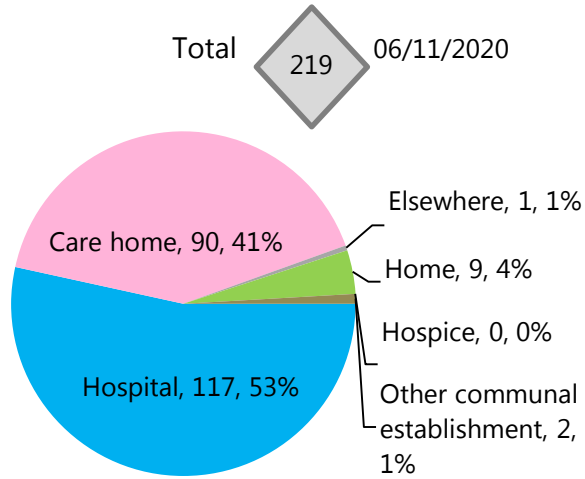
Care Home



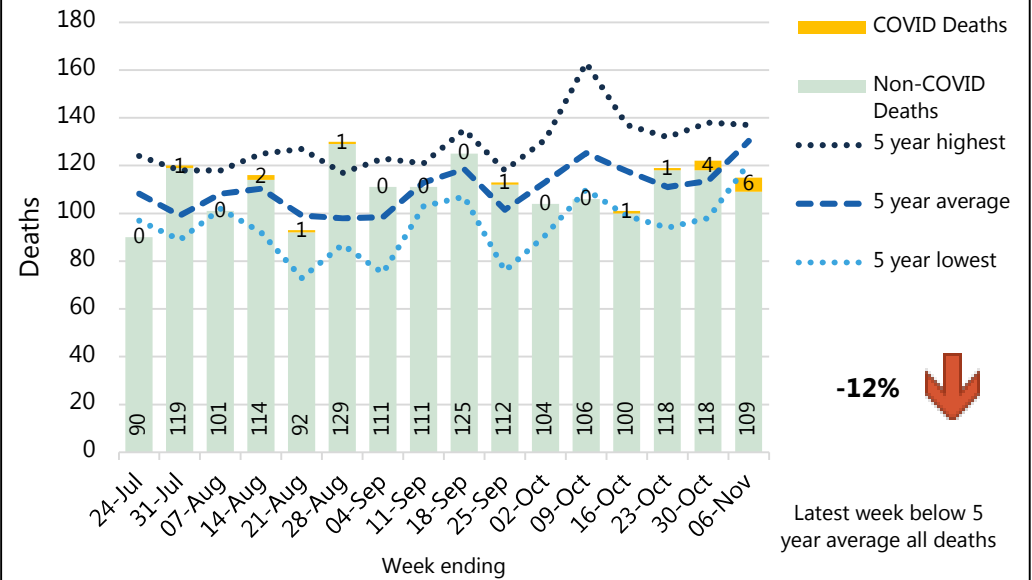
Other



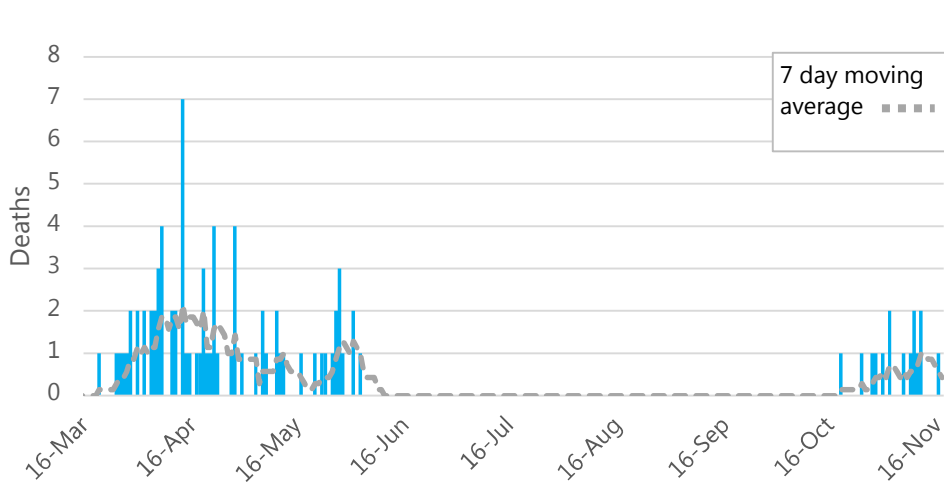
## All COVID Deaths in Somerset by Place of Death (ONS)



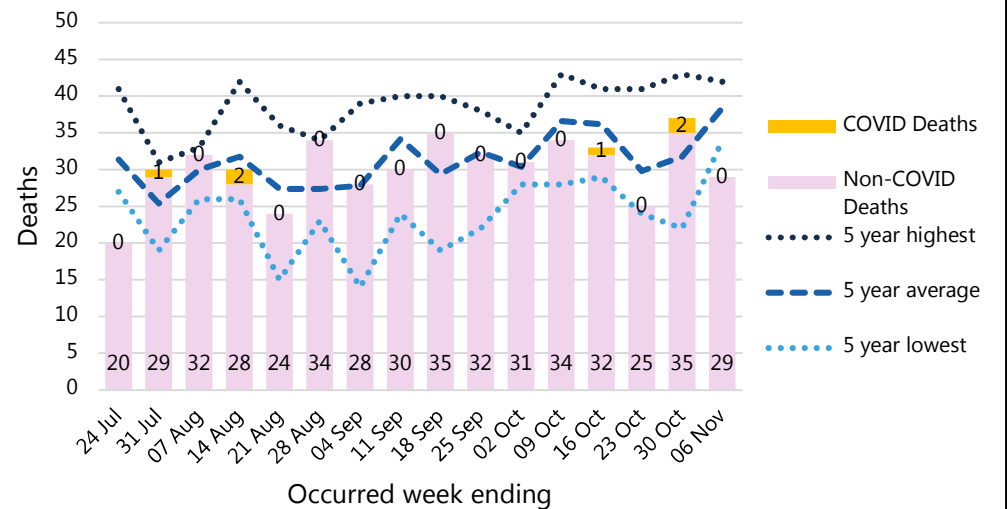
## Somerset All Deaths (weekly) (ONS)



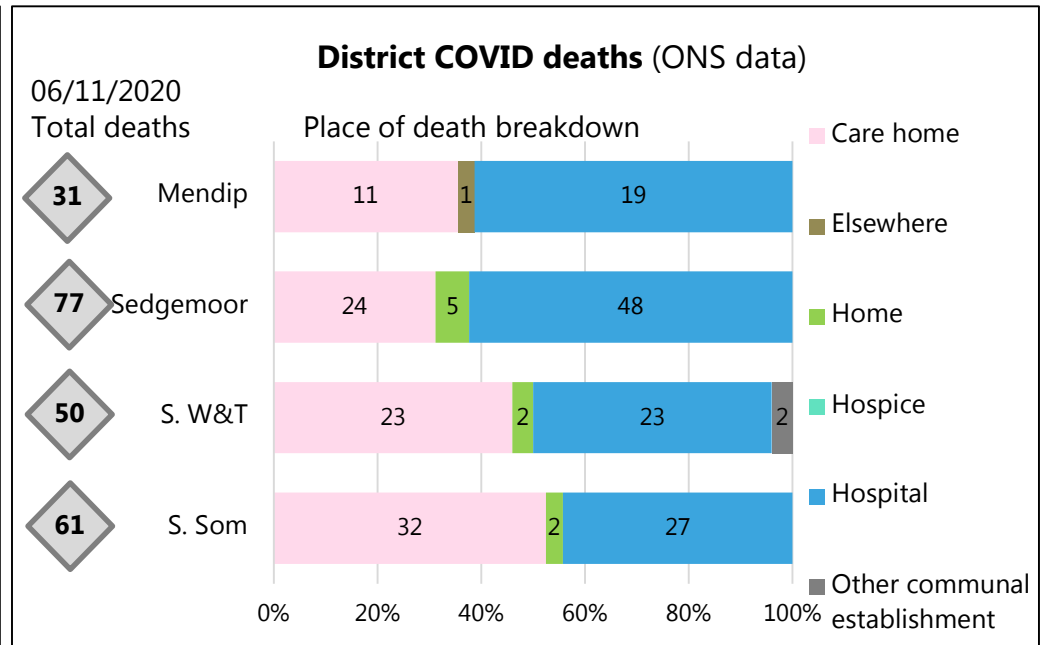
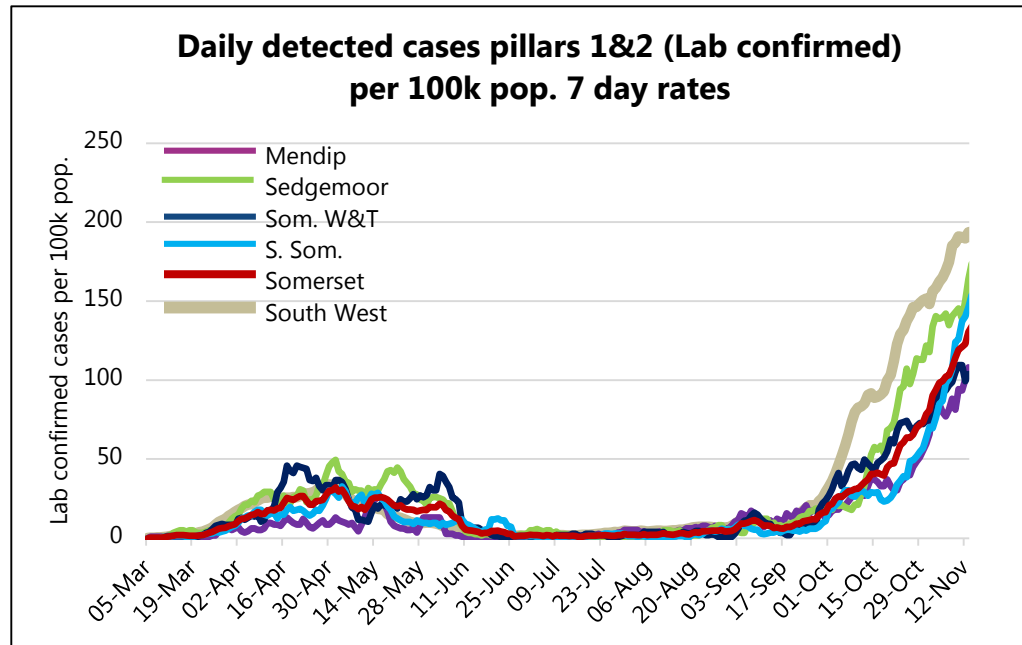
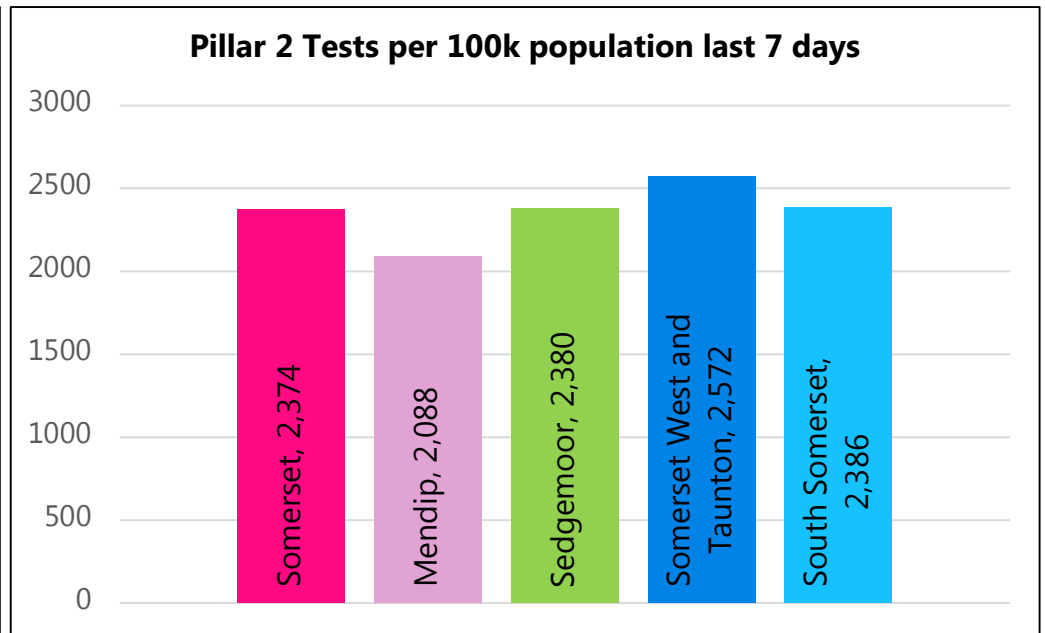
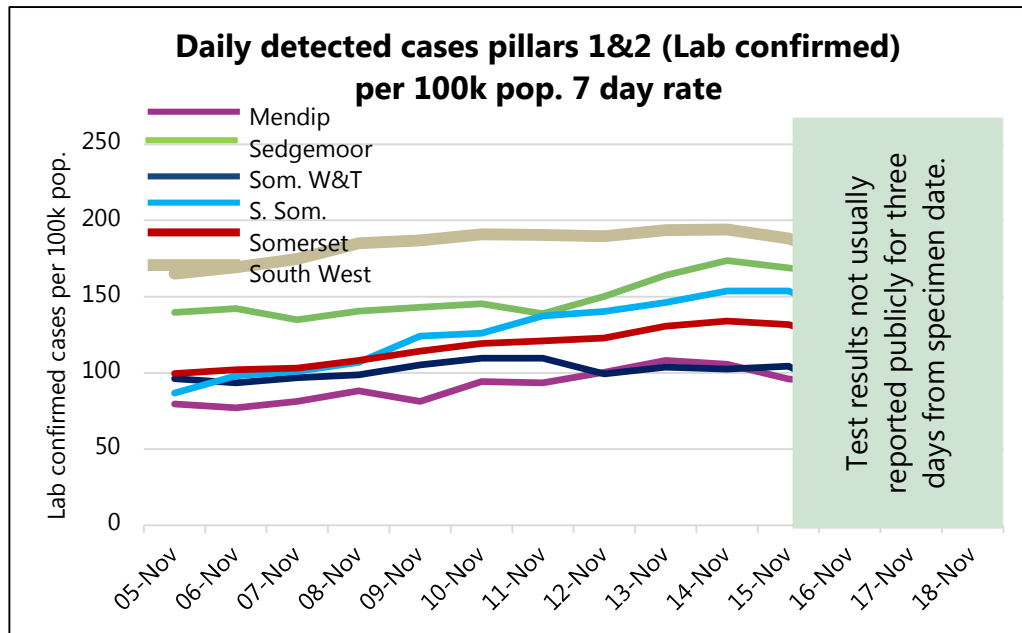
## Daily COVID Deaths at Somerset Hospitals



## Somerset Care Home Deaths (weekly) (ONS)



# Somerset COVID-19 Local Outbreak Management Plan Dashboard





# Somerset COVID-19 Local Outbreak Management Plan Dashboard

Data type	Next updated	How published	Link for more information
Public Health Outbreaks	19/11/2020	Summarised end of day, daily.	None. Not publicly distributed.
Lab confirmed cases: Pillars 1 & 2	19/11/2020	Published daily ~5pm with data to day before. By specimen date.	<a href="https://coronavirus.data.gov.uk/">https://coronavirus.data.gov.uk/</a>
Data by MSOA for the map	19/11/2020	Published daily. By specimen date.	None. Not publicly distributed. Data based on PHE reported cases. To note, this may differ slightly data on the coronavirus.data.gov.uk website due to additional data cleaning by PHE.
R value from SAGE group	20/11/2020	Published weekly on Friday.	<a href="https://www.gov.uk/guidance/the-r-number-in-the-uk">https://www.gov.uk/guidance/the-r-number-in-the-uk</a>
Pillar 2 testing	25/11/2020	Summarised weekly on Wednesdays and Thursdays	None. Not publicly distributed.
Hospital deaths (NHSE)	19/11/2020	Published daily ~2pm with data to day before. Most recent 5 days subject to data updates.	<a href="https://www.england.nhs.uk/statistics/statistical-work-areas/covid-19-daily-deaths/">https://www.england.nhs.uk/statistics/statistical-work-areas/covid-19-daily-deaths/</a>
Death counts (ONS) County and district level	24/11/2020	Published weekly on Tuesday with data to the Friday 11 days before.	<a href="https://www.ons.gov.uk/peoplepopulationandcommunity/healthandsocialcare/causesofdeath/datasets/deathregistrationsandoccurrencesbylocalauthorityandhealthboard">https://www.ons.gov.uk/peoplepopulationandcommunity/healthandsocialcare/causesofdeath/datasets/deathregistrationsandoccurrencesbylocalauthorityandhealthboard</a>

As of 2nd June 2020, numbers of lab-confirmed positive cases now include those identified by testing in all settings (pillars 1 and 2).

NB The higher case numbers seen in early June include a number of cases that have been falsely identified as positive following an issue at the laboratory. For further information please see the following statement from Somerset NHS Foundation Trust <https://somerseft.nhs.uk/?news=issue-affecting-some-covid-19-test-results-for-some-inpatients-at-musgrove-park-hospital>

Dashboard available at: <https://www.somerset.gov.uk/covid-19-dashboard/>