

## Report to the NHS Somerset Clinical Commissioning Group on 22 July 2021

<b>Title: Update on Covid-19 and the Vaccination Programme</b>	<b>Enclosure E</b>
--	--------------------

Version Number / Status:	N/A
Executive Lead	James Rimmer, Chief Executive
Clinical Lead:	Trudi Grant, Director of Public Health and Dr Alex Murray
Author:	James Rimmer, Chief Executive

### Summary and Purpose of Paper

This paper sets out the latest published data (13 July 2021) for the Covid-19 pandemic as produced by Somerset County Council's Public Health Team. It shows that in Somerset there have been:

- 22,633 lab-confirmed Covid-19 cases
- 799 Covid deaths (as of 25 June 2021)
- 145.5 cases per 100,000 population in the last 7 days (week 3-9 July 2021)
- The South West R number range as at 9 July 2021 was 1.3 to 1.6
- The England R number range at 9 July 2021 was 1.2 to 1.5

The Director of Public Health will present the very latest information at the meeting on 22 July 2021.

A verbal update on the Vaccination Programme will be provided by Dr Alex Murray.

### Recommendations and next steps

The Governing Body is asked to **Note** the updates on Covid-19 and the Vaccination Programme.

### Impact Assessments – key issues identified

<b>Equality</b>	Equality and Diversity is considered in focusing planning on vulnerable groups who may be at risk from the pandemic.
<b>Quality</b>	A key principle of EPPR planning is ensure that controls and assurances that are in place to manage the identified community risks and to minimise disruption and maintain the quality of services as far as possible.
<b>Privacy</b>	All partner agencies in Somerset are signatories to the Somerset Information Sharing Protocol. There was a specific cell concentrating on data protection and information sharing.
<b>Engagement</b>	There has been broad communication and engagement with partners and local groups over the course of the pandemic response.

<b>Financial / Resource</b>	Resources have been identified within the CCG budget for emergency planning and business continuity. Additional resources have been allocated to support the pandemic response			
<b>Governance or Legal</b>	The CCG's Legal duties in relation to Emergency Preparedness Resilience and Response (EPRR) are set out in section 4 of the Emergency Planning and Resilience Policy.			
<b>Risk Description</b>	<p>Risks associated with the incident have been captured on a Covid-19 risk register and also on the Corporate Risk Register (Datix refs 386, 406,428)</p> <p>Risks identified and managed earlier during the incident response on the Corporate Risk Register have subsequently been closed (427 – Children and Young Persons Mental Health access rate and 390 – Reduced clinical safety)</p> <p>Risk 386 in relation to Personal Protective Equipment (PPE) has been assessed as having reduced in likelihood and come off the Corporate Risk Register.</p>			
<b>Risk Rating</b>	<b>Covid-19 Corporate Risk</b>	<b>Consequence</b>	<b>Likelihood</b>	<b>RAG Rating</b>
	Increased demand for mental health services (ref 406)	4	3	12
	Risk of nosocomial transmission (ref 428)	4	4	16

## Detected cases



## Outbreaks and Clusters



This represents the number of outbreaks and clusters currently being managed. Outbreaks are any situation with two or more cases, where at least two cases are known to be related to each other. Clusters are any incidents being managed at the same setting with two or more cases but where there is no established link between any of the cases.

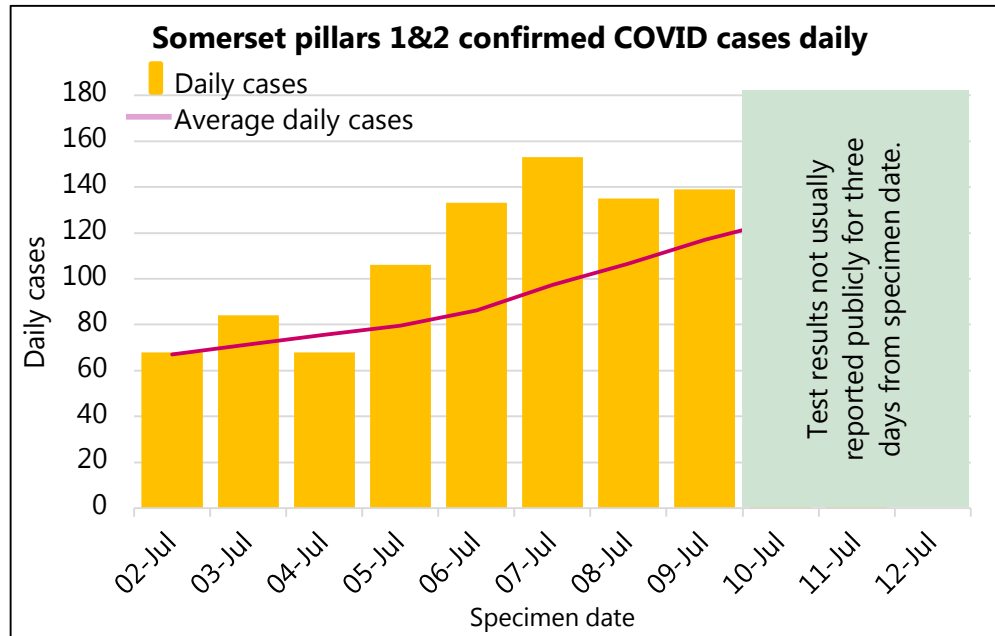


## Latest 7 day rate per 100k

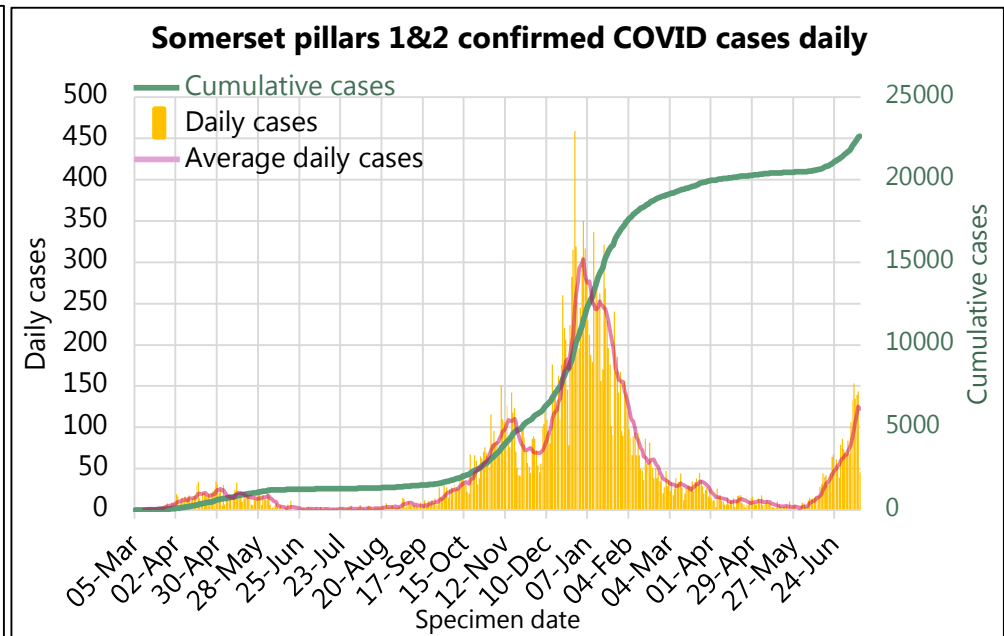
03-Jul to 09-Jul



## Most recent days of cases



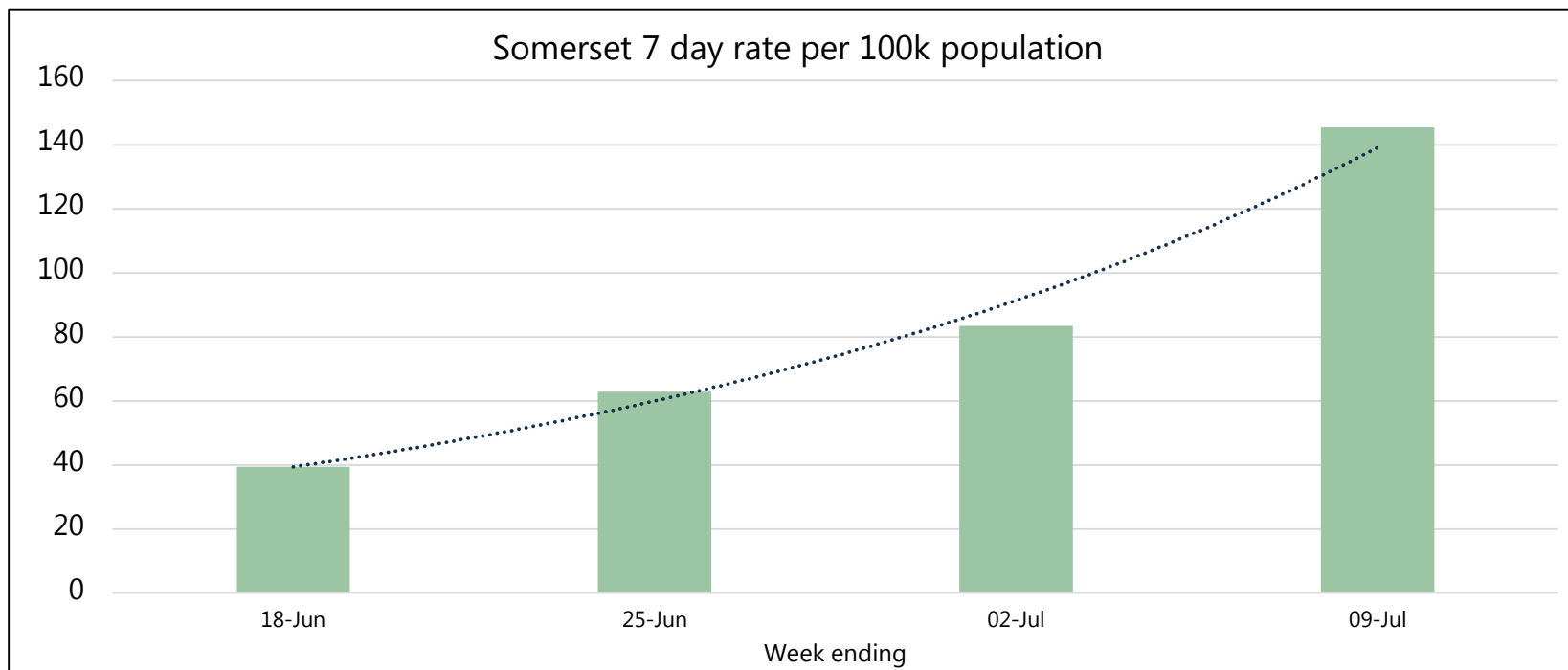
## Overall profile of the epidemic in Somerset



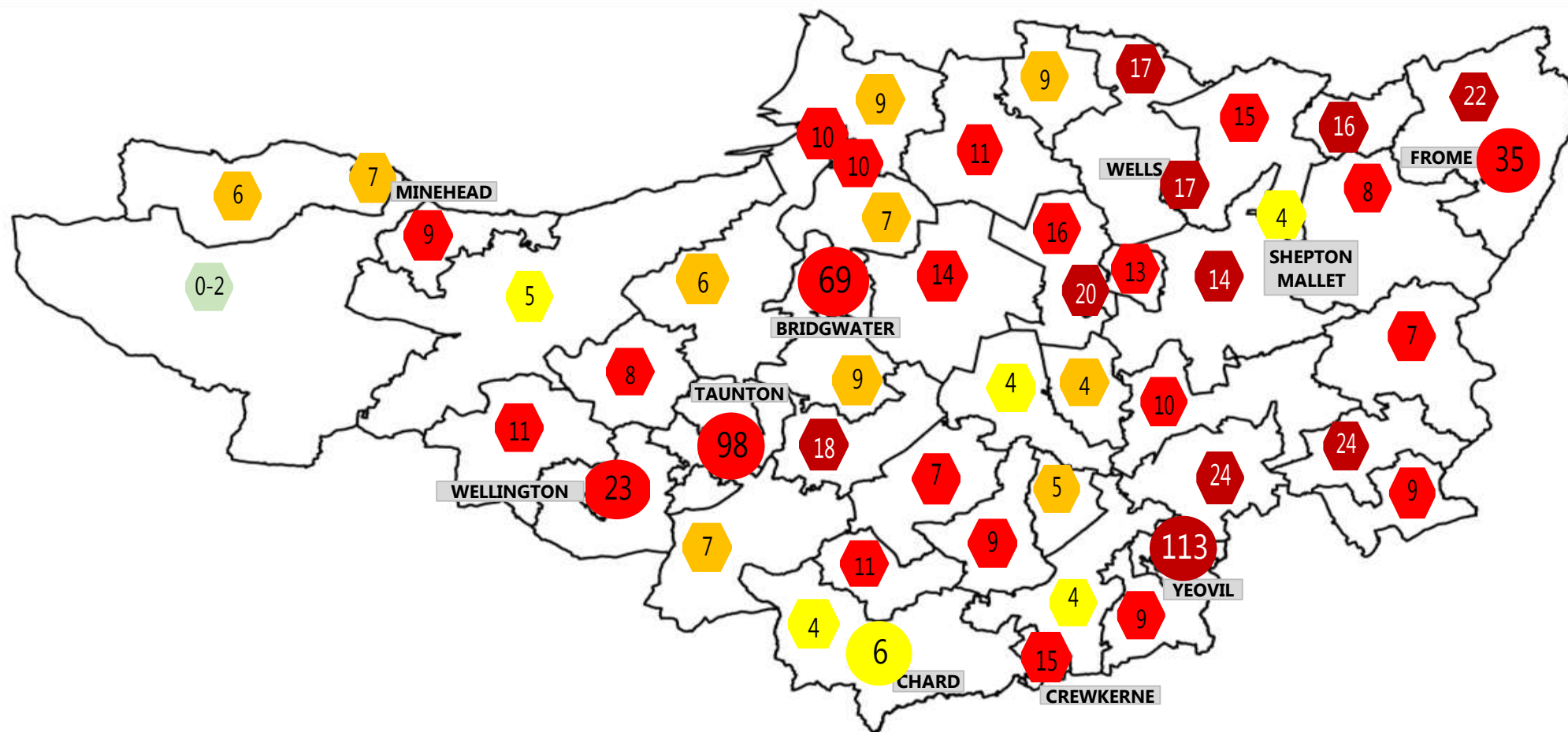
# Somerset COVID-19 Local Outbreak Management Plan Dashboard - Cases

Weekly cases (excludes most recent three days with incompletely reported results)

District	12-Jun to 18-Jun	7 day rate per 100k	19-Jun to 25-Jun	7 day rate per 100k	26-Jun to 02-Jul	7 day rate per 100k	03-Jul to 09-Jul	7 day rate per 100k
Mendip	40	34.6	61	52.8	91	78.7	197	170.4
Sedgemoor	64	52.0	104	84.4	121	98.2	154	125.0
Som W & Taun.	75	48.4	120	77.4	133	85.7	194	125.1
Sth Somerset	42	24.9	68	40.4	124	73.7	273	162.2
<b>Somerset</b>	<b>221</b>	<b>39.3</b>	<b>353</b>	<b>62.8</b>	<b>469</b>	<b>83.4</b>	<b>818</b>	<b>145.5</b>



# Somerset COVID-19 Local Outbreak Management Plan Dashboard - Cases Map

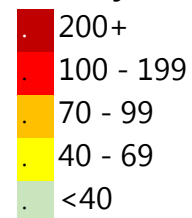


Date range 03-Jul to 09-Jul

March 2021 - we have updated the colour scheme to reflect the new lower case numbers.

The numbers in this map show the current cases in the past 7 days, the colour of the tag shows the equivalent rate of positive cases per 100,000 population over a 7 day period. Case numbers in Taunton, Wellington, Chard, Yeovil, Bridgwater and Frome have been combined across the urban area with rates based on the combined area population.

## Weekly rate per 100k



# Somerset COVID-19 Local Outbreak Management Plan Dashboard - Wider Context

## Latest R number range for the South West

# 1.3 - 1.6

Last updated on Friday 09 Jul 2021

Produced by:

UK Government Scientific Advisory Group for Emergencies (SAGE)

## What is R?

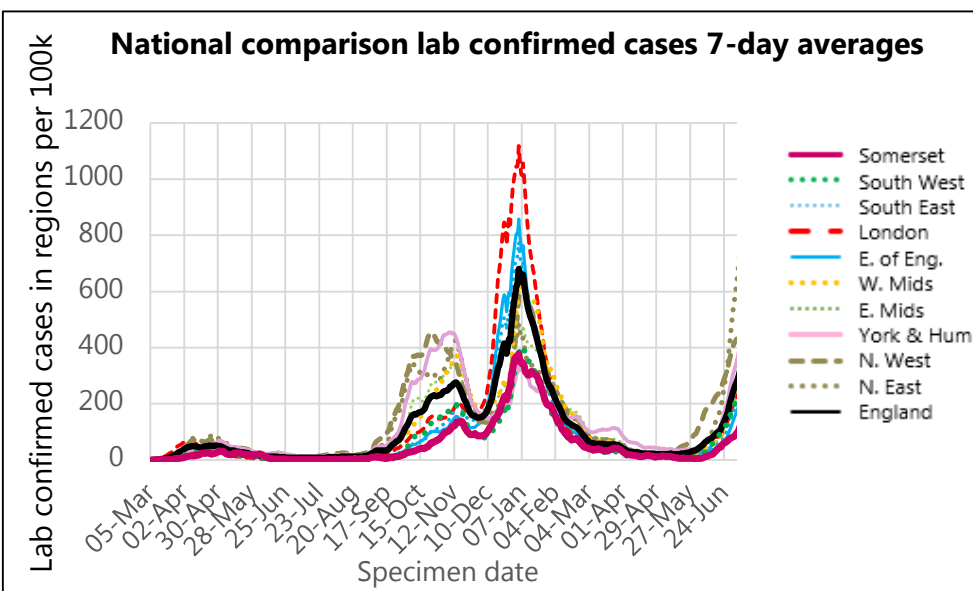
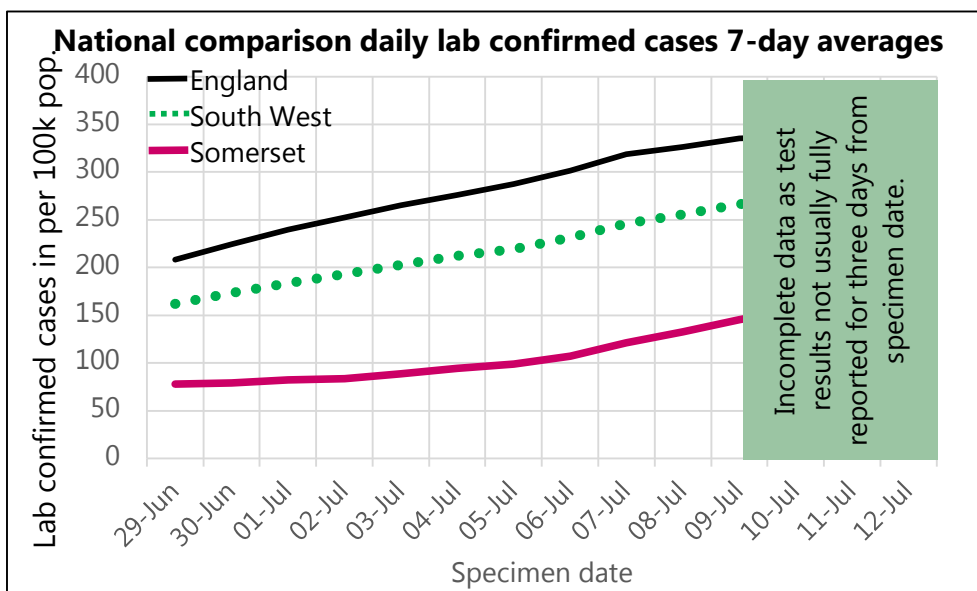
The reproduction number (R) is the average number of secondary infections produced by 1 infected person.

An R number of 1 means that on average every person who is infected will infect 1 other person, meaning the total number of new infections is stable.

## Region

## R

Region	R
UK	No longer produced
England	1.2 - 1.5
East of England	1.1 - 1.5
London	1.1 - 1.4
Midlands	1.2 - 1.5
NE and Yorks	1.3 - 1.6
North West	1.1 - 1.2
South East	1.3 - 1.6
South West	1.3 - 1.6



# Somerset COVID-19 Local Outbreak Management Plan Dashboard - Deaths

COVID deaths week ending

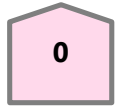
📅 25/06/2021

All COVID

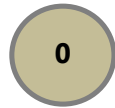
Hospital



Care Home

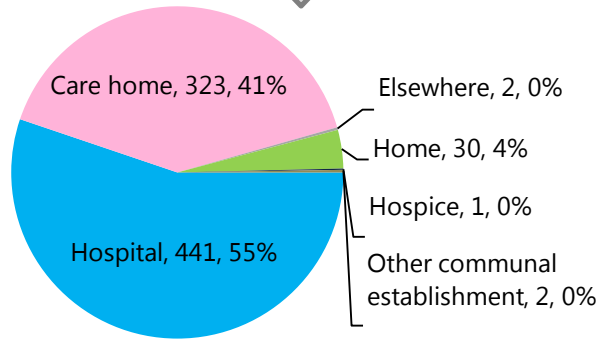


Other

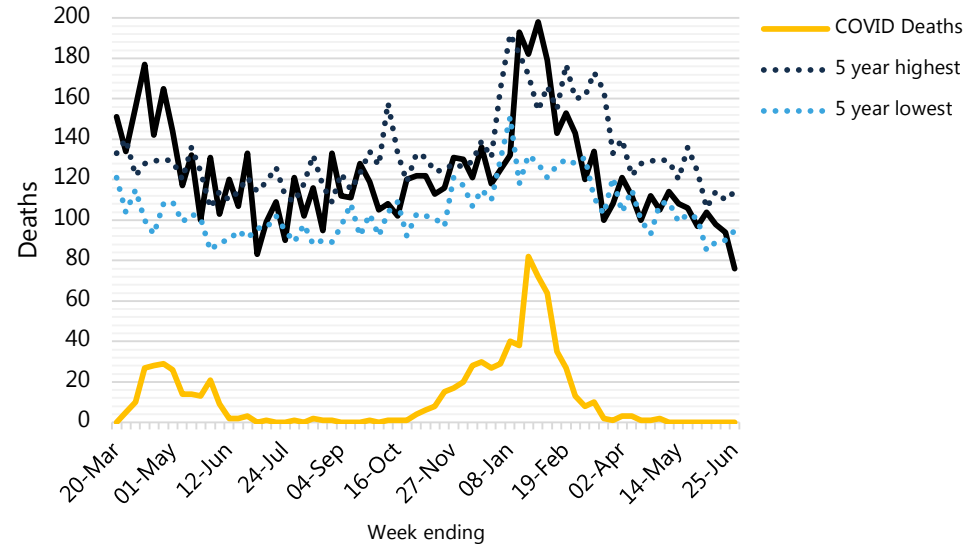


## All COVID Deaths in Somerset by Place of Death (ONS)

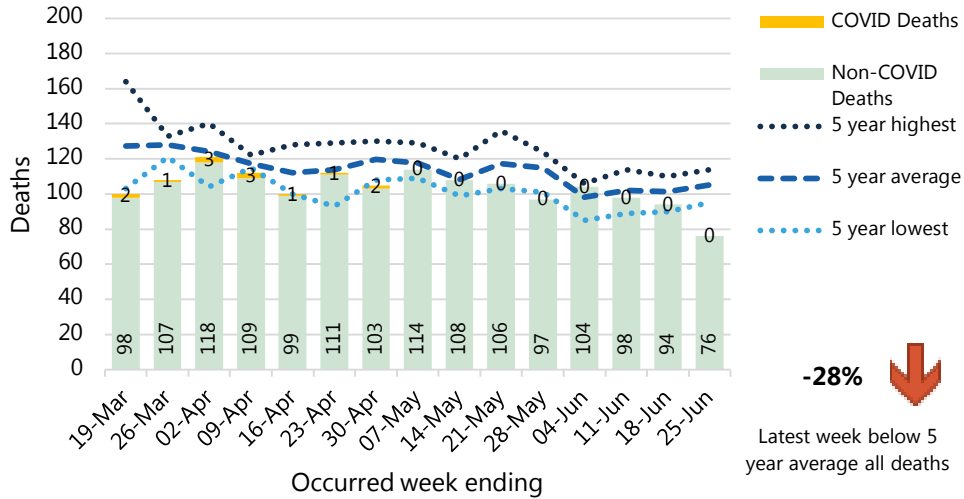
Total 799 25/06/2021



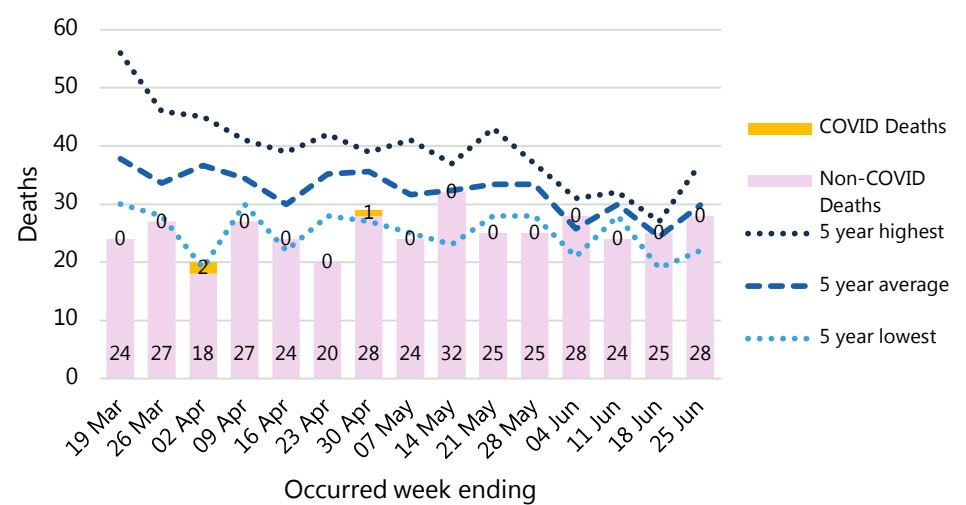
## Somerset All Deaths (weekly) (ONS)



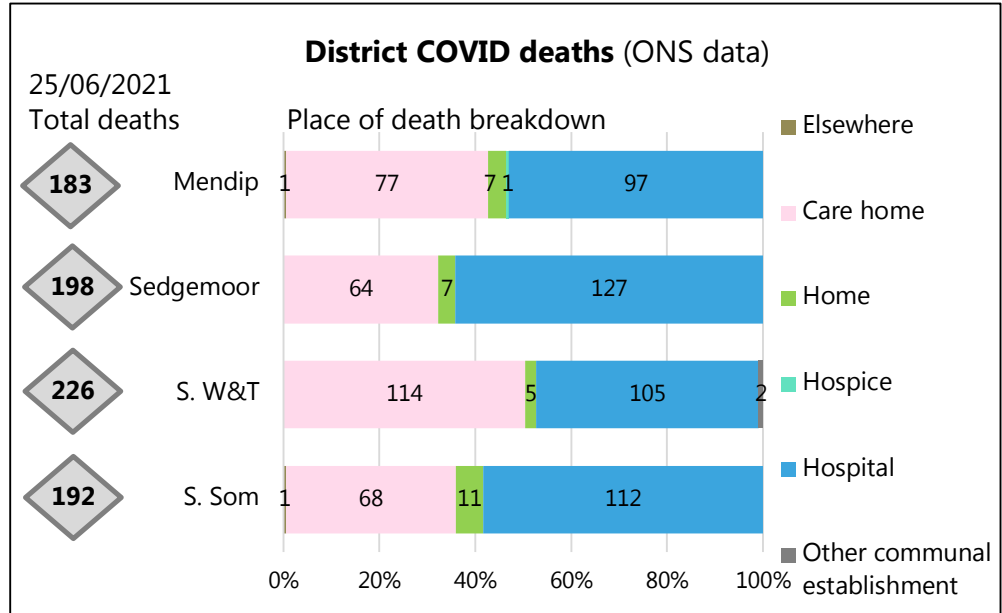
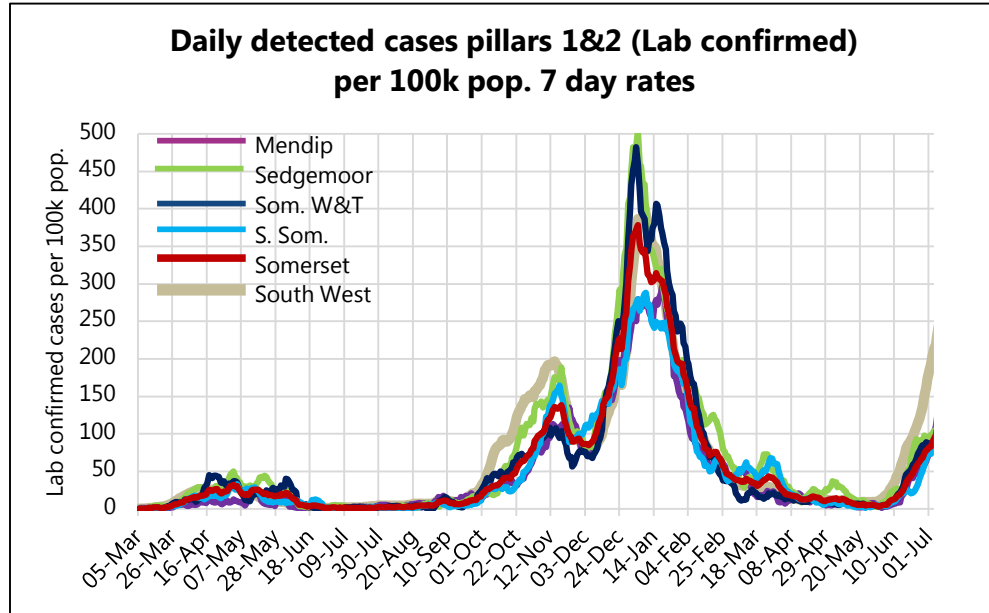
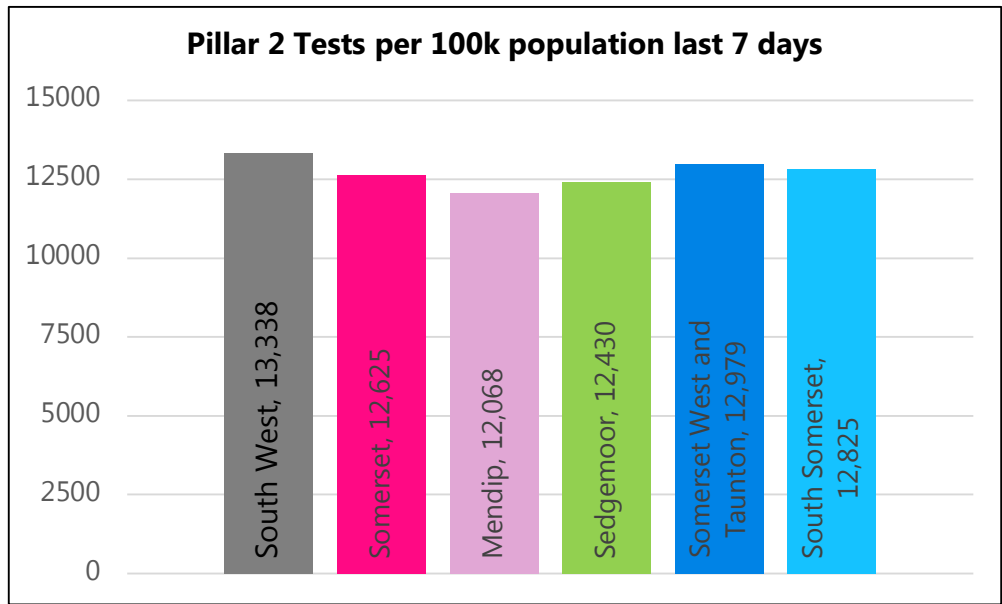
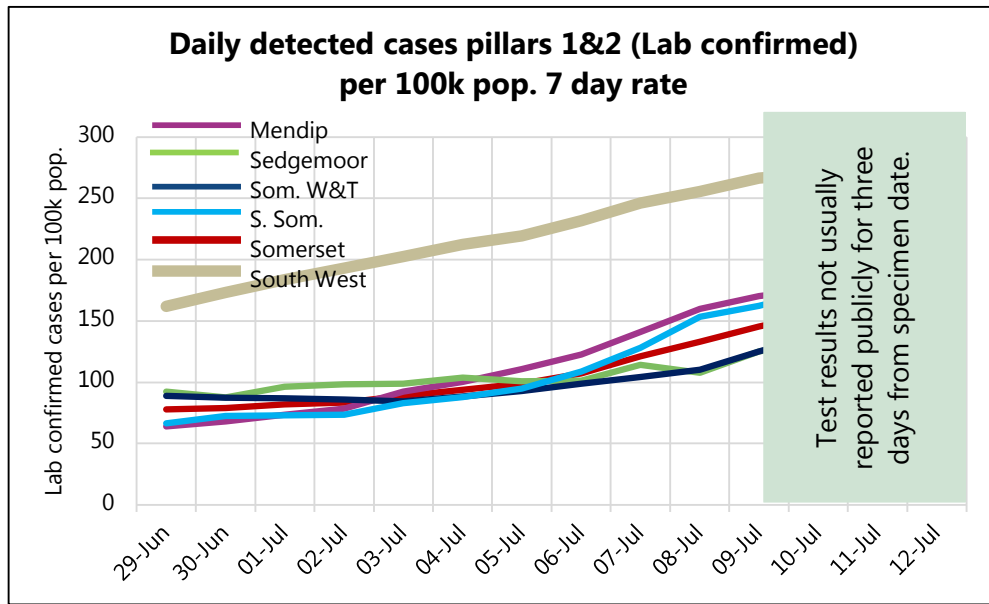
## Somerset All Deaths (weekly) (ONS)



## Somerset Care Home Deaths (weekly) (ONS)



# Somerset COVID-19 Local Outbreak Management Plan Dashboard - District focus



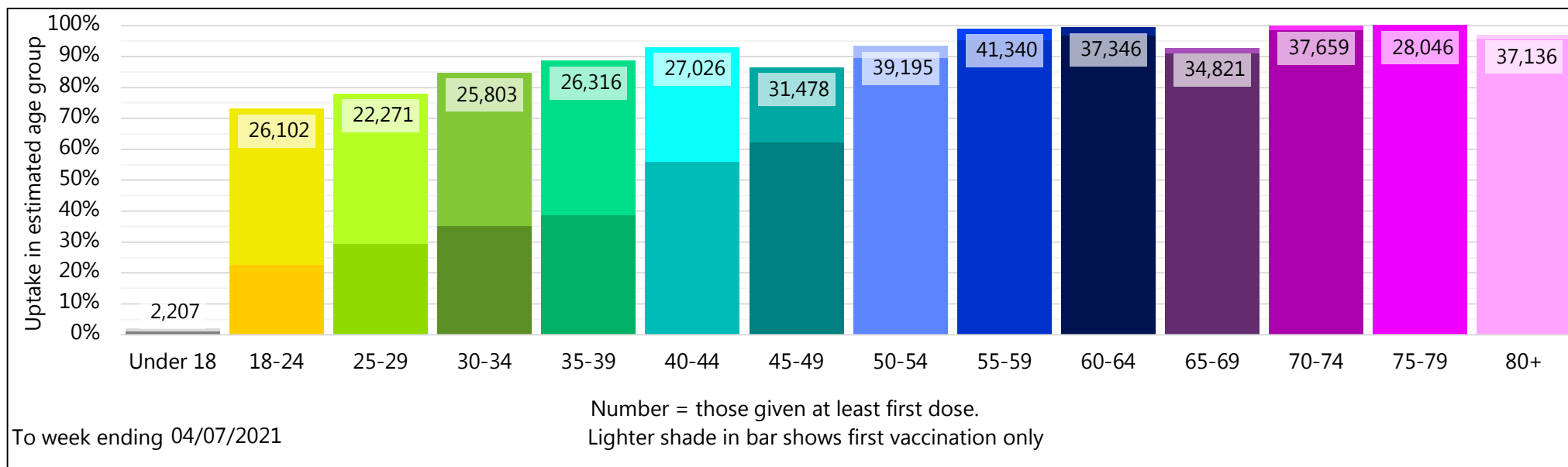


# Somerset COVID-19 Local Outbreak Management Plan Dashboard - COVID Vaccinations

This page will be further developed once there is more routinely available data published nationally.

This vaccination data is NHS data, reported here with the agreement of the Somerset Clinical Commissioning Group. Specific queries regarding vaccination need to be directed towards the NHS. For more information on the local COVID-19 Vaccination Programme please see

[Covid-19 vaccinations in Somerset - Somerset CCG](#)



Population numbers are based on ONS 2019 estimates hence potential for uptake over 100%.

Percentage of 18+ population vaccinated at least once = 91.9%  
 Percentage of 18+ population vaccinated twice = 72.5%

## Somerset COVID-19 Local Outbreak Management Plan Dashboard - Data

---

Data type	Next updated	How published	Link for more information
Lab confirmed cases: Pillars 1 & 2	13/07/2021	Published daily ~5pm with data to day before. By specimen date.	<a href="https://coronavirus.data.gov.uk/">https://coronavirus.data.gov.uk/</a>
Data by MSOA for the map	13/07/2021	Published daily. By specimen date.	None. Not publicly distributed. Data based on PHE reported cases. To note, this may differ slightly from data on the coronavirus.data.gov.uk website due to additional data cleaning by PHE.
R value from SAGE group	16/07/2021	Published weekly on Friday.	<a href="https://www.gov.uk/guidance/the-r-number-in-the-uk">https://www.gov.uk/guidance/the-r-number-in-the-uk</a>
Pillar 2 testing	14/07/2021	Summarised weekly on Wednesdays and Thursdays	None. Not publicly distributed.
Death counts (ONS) County and district level	13/07/2021	Published weekly on Tuesday with data to the Friday 11 days before.	<a href="https://www.ons.gov.uk/peoplepopulationandcommunity/healthandsocialcare/causesofdeath/datasets/deathregistrationsandoccurrencesbylocalauthorityandhealthboard">https://www.ons.gov.uk/peoplepopulationandcommunity/healthandsocialcare/causesofdeath/datasets/deathregistrationsandoccurrencesbylocalauthorityandhealthboard</a>
Vaccination data	15/07/2021	Published weekly on Thursday.	<a href="https://www.england.nhs.uk/statistics/statistical-work-areas/covid-19-vaccinations/">https://www.england.nhs.uk/statistics/statistical-work-areas/covid-19-vaccinations/</a>

As of 2nd June 2020, numbers of lab-confirmed positive cases now include those identified by testing in all settings (pillars 1 and 2).

In January 2021, we changed the presentation of deaths data to be shown compared to the average and five year high and low deaths by date of occurrence rather than date of reporting. Deaths by date of reporting fluctuates more, especially when affected by bank holidays. Reporting by date of death does mean the latest week's figures are usually slightly incomplete when first reported due to delays in registrations of some deaths whereas the comparison years are more complete. For week 53 we have taken an average of 52 and week 1 comparison years.

Dashboard available at: <https://www.somerset.gov.uk/covid-19-dashboard/>