

Report to the NHS Somerset Clinical Commissioning Group on 25 November 2021

Title: Update on Covid-19 and the Vaccination Programme	Enclosure E
--	--------------------

Version Number / Status:	N/A
Executive Lead	James Rimmer, Chief Executive
Clinical Lead:	Trudi Grant, Director of Public Health and Dr Alex Murray
Author:	James Rimmer, Chief Executive

Summary and Purpose of Paper

This paper sets out the latest published data (at 18 November 2021) for the Covid-19 pandemic as produced by Somerset County Council's Public Health Team. It shows that in Somerset, since the start of the pandemic, there have been:

- 64,304 detected Covid-19 cases
- 911 Covid deaths (as of 5 November 2021)
- 453.7 cases per 100,000 population in the last 7 days (week 8-14 November 2021)
- The South West R number range as at 12 November 2021 was 0.7 to 1.0
- The England R number range at 12 November 2021 was 0.8-1.0

The Director of Public Health will present the very latest information at the meeting on 25 November 2021.

A verbal update on the Vaccination Programme will be provided by Dr Alex Murray.

Recommendations and next steps

The Governing Body is asked to **Note** the updates on Covid-19 and the Vaccination Programme.

Impact Assessments – key issues identified

Equality	Equality and Diversity is considered in focusing planning on vulnerable groups who may be at risk from the pandemic.
Quality	A key principle of EPPR planning is ensure that controls and assurances that are in place to manage the identified community risks and to minimise disruption and maintain the quality of services as far as possible.
Privacy	All partner agencies in Somerset are signatories to the Somerset Information Sharing Protocol. There was a specific cell concentrating on data protection and information sharing.
Engagement	There has been broad communication and engagement with partners and local groups over the course of the pandemic response.

Financial / Resource		Resources have been identified within the CCG budget for emergency planning and business continuity. Additional resources have been allocated to support the pandemic response		
Governance or Legal		The CCG's Legal duties in relation to Emergency Preparedness Resilience and Response (EPRR) are set out in section 4 of the Emergency Planning and Resilience Policy.		
Risk Description		Risks associated with the incident have been captured on a Covid-19 risk register and also on the Corporate Risk Register (Datix refs 406,428) Risks identified and managed earlier during the incident response on the Corporate Risk Register have subsequently been closed (427 – Children and Young Persons Mental Health access rate 390 – Reduced clinical safety 386 – Personal Protective Equipment)		
Risk Rating	Covid-19 Corporate Risk	Consequence	Likelihood	RAG Rating
	Increased demand for mental health services (ref 406)	4	3	12
	Risk of nosocomial transmission (ref 428)	4	4	16

Detected cases



Latest 7 day rate per 100k

08-Nov to 14-Nov



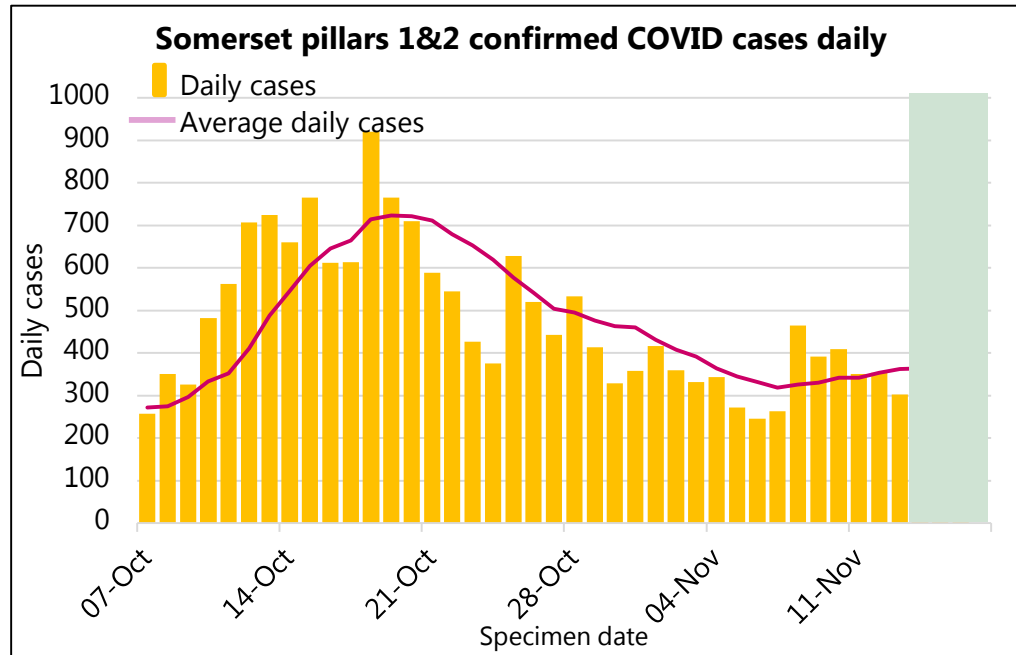
Outbreaks and Clusters



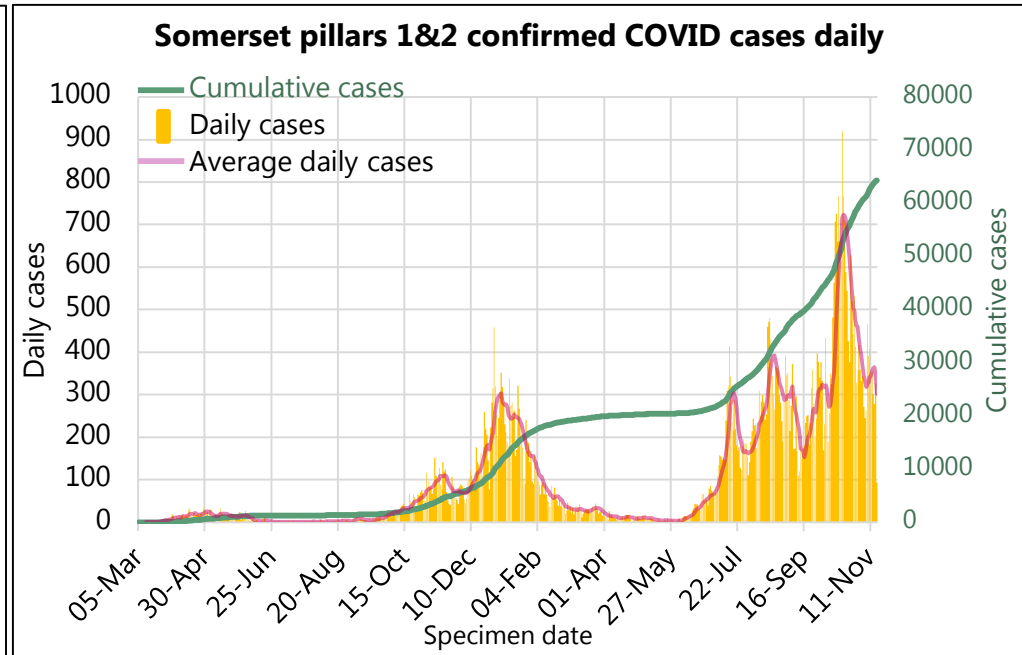
This represents the number of outbreaks and clusters currently being managed. Outbreaks are any situation with two or more cases, where at least two cases are known to be related to each other. Clusters are any incidents being managed at the same setting with two or more cases but where there is no established link between any of the cases.



Most recent days of cases



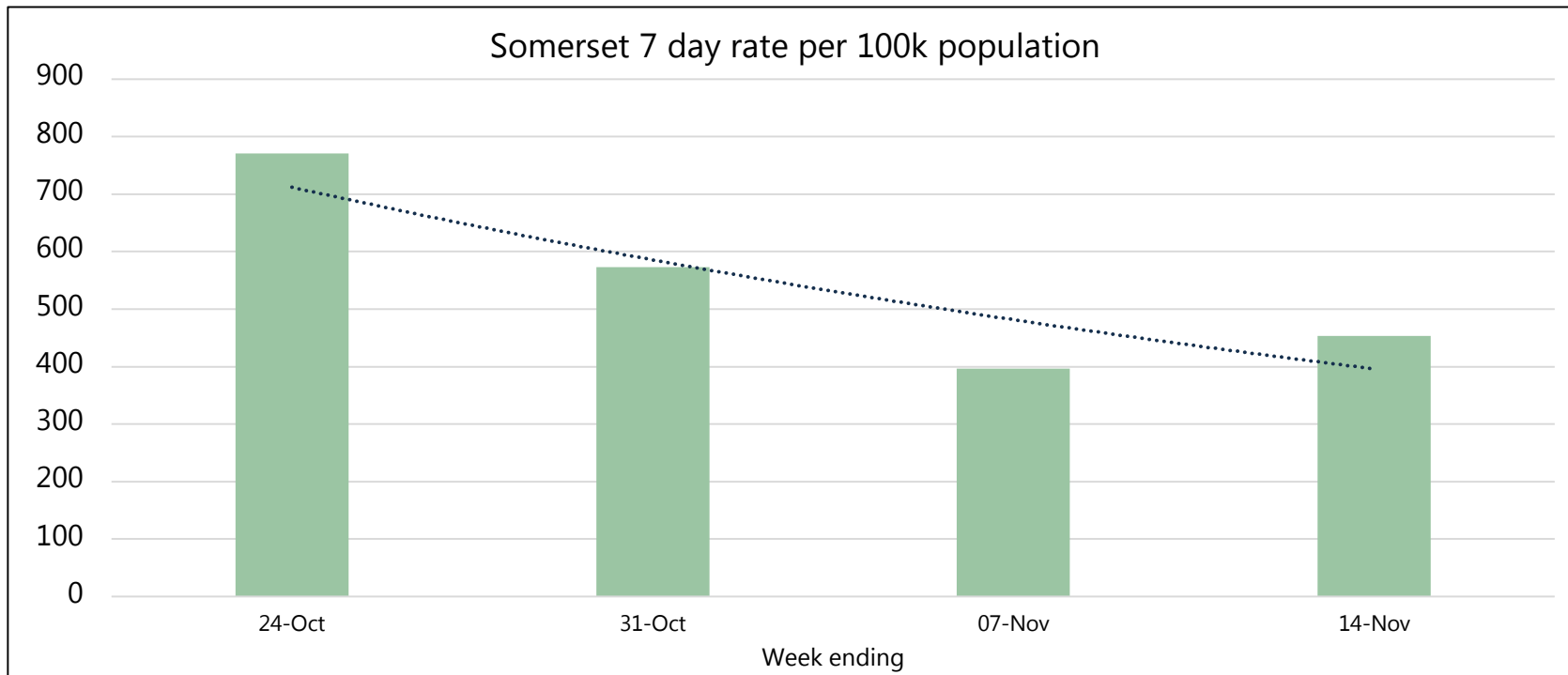
Overall profile of the epidemic in Somerset



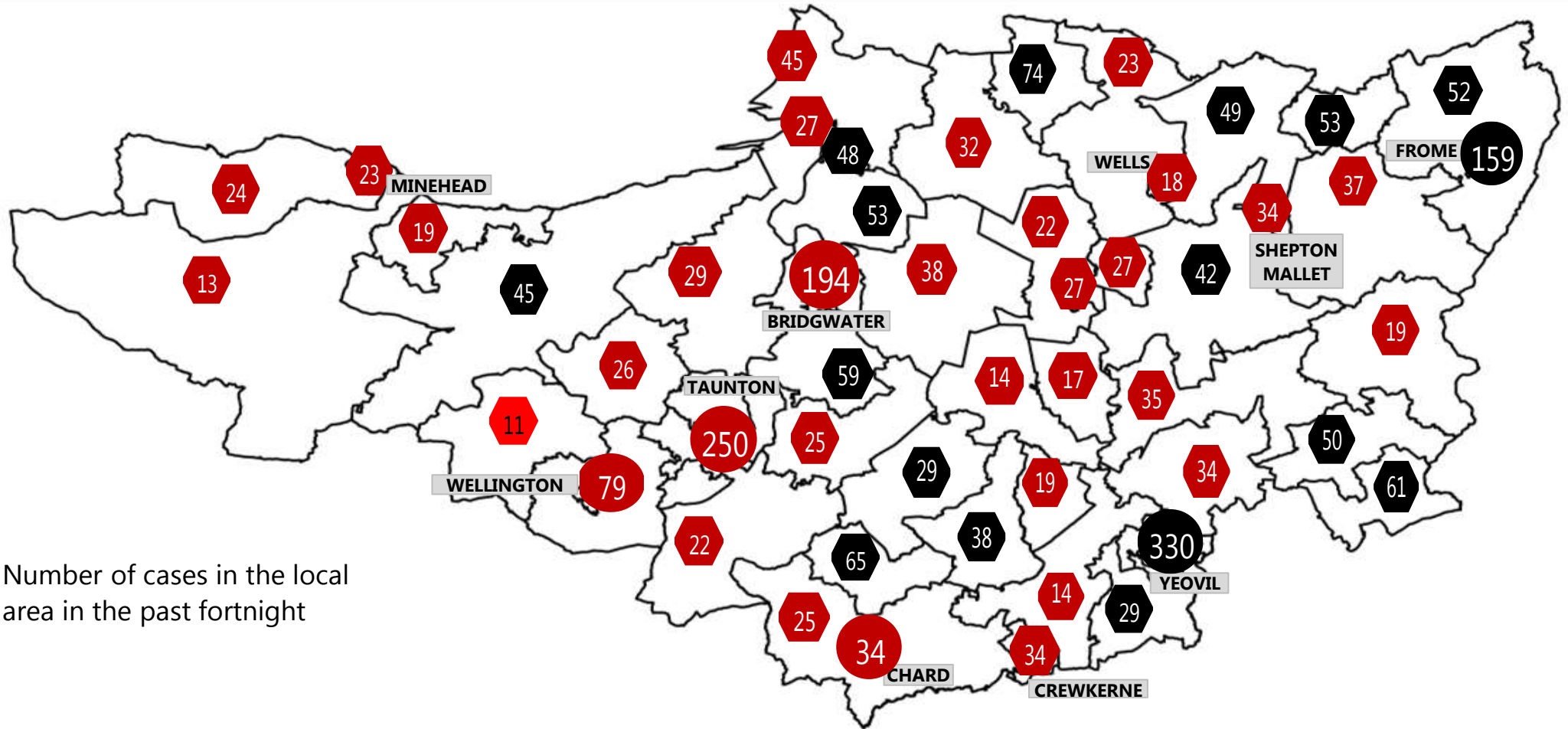
Somerset COVID-19 Local Outbreak Management Plan Dashboard - Cases

Weekly cases (excludes most recent three days with incompletely reported results)

District	18-Oct to 24-Oct	7 day rate per 100k	25-Oct to 31-Oct	7 day rate per 100k	01-Nov to 07-Nov	7 day rate per 100k	08-Nov to 14-Nov	7 day rate per 100k
Mendip	1101	952.5	743	642.8	555	480.2	543	469.8
Sedgemoor	864	701.4	637	517.1	446	362.1	599	486.3
Som W & Taun.	1195	770.4	805	519.0	448	288.8	537	346.2
Sth Somerset	1171	695.6	1038	616.6	782	464.5	872	518.0
Somerset	4331	770.3	3223	573.3	2231	396.8	2551	453.7



Somerset COVID-19 Local Outbreak Management Plan Dashboard - Cases Map

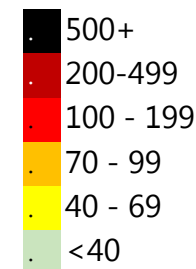


Number of cases in the local area in the past fortnight

Date range 08-Nov to 14-Nov

The numbers in this map show the current cases in the past 7 days, the colour of the tag shows the equivalent rate of positive cases per 100,000 population over a 7 day period. Case numbers in Taunton, Wellington, Chard, Yeovil, Bridgwater and Frome have been combined across the urban area with rates based on the combined area population.

Weekly rate per 100k



Somerset COVID-19 Local Outbreak Management Plan Dashboard - Wider Context

Latest R number range for the South West

0.7 to 1.0

Last updated on Friday 12 Nov 2021

Produced by:

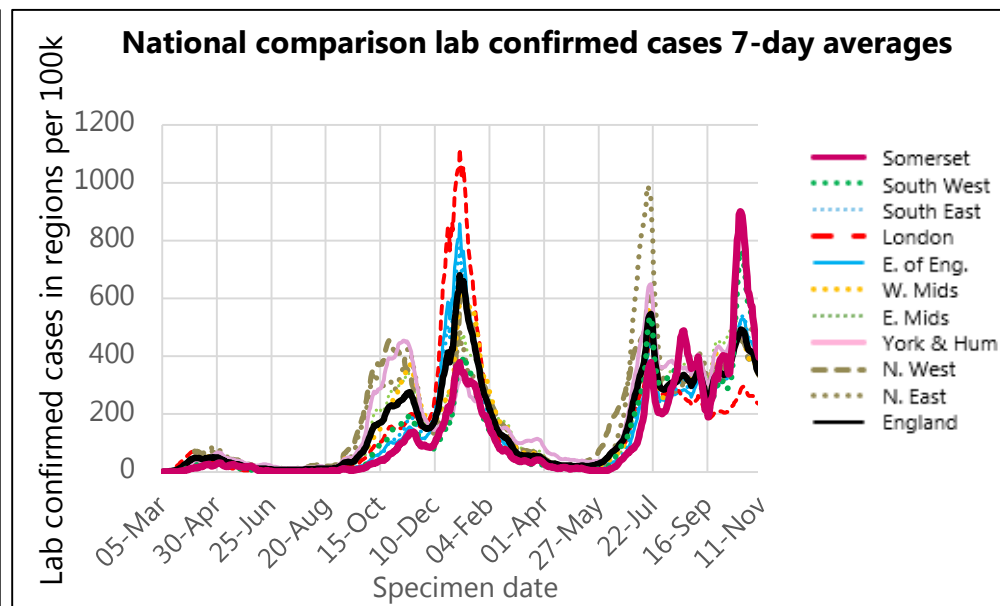
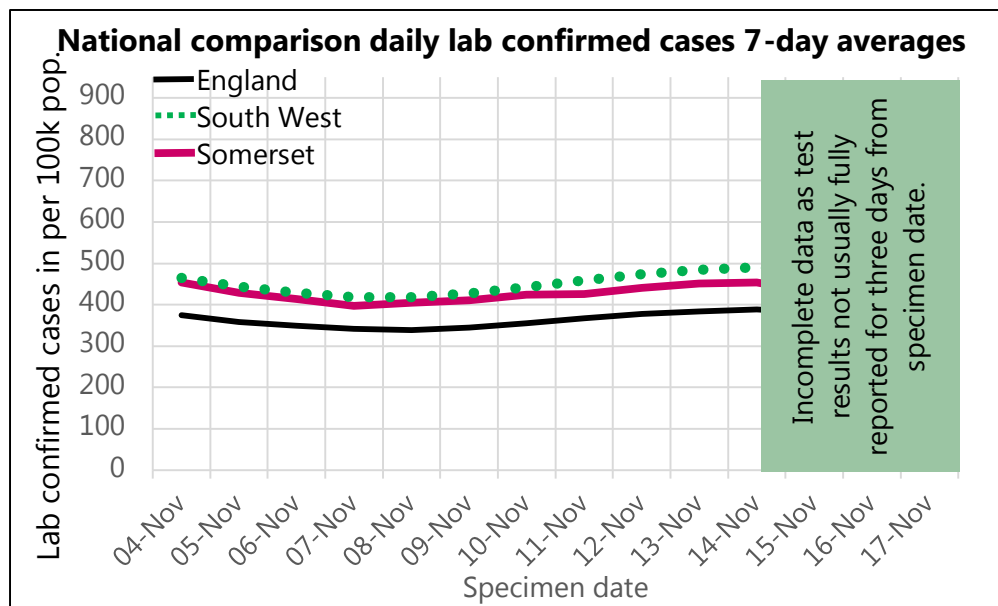
UK Government Scientific Advisory Group for Emergencies (SAGE)

What is R?

The reproduction number (R) is the average number of secondary infections produced by 1 infected person.

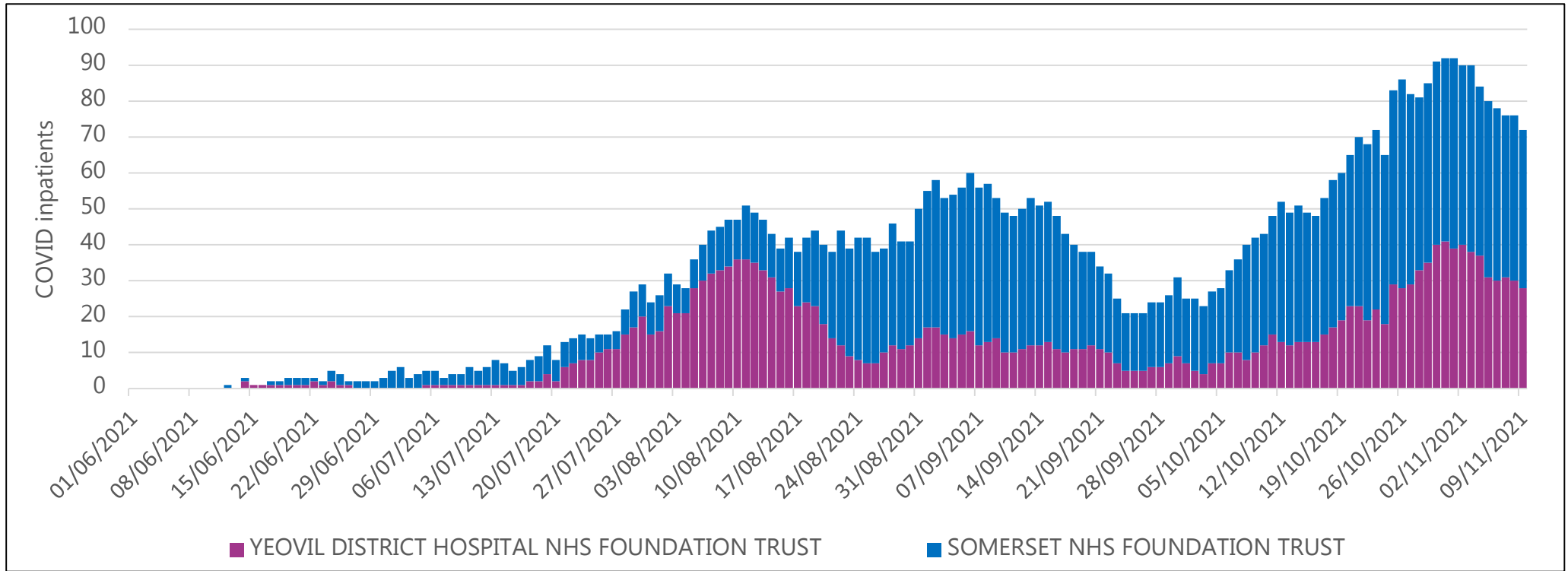
An R number of 1 means that on average every person who is infected will infect 1 other person, meaning the total number of new infections is stable.

Region	R
UK	No longer produced
England	0.8 to 1.0
East of England	0.8 to 1.0
London	0.8 to 1.0
Midlands	0.8 to 1.0
NE and Yorks	0.8 to 1.0
North West	0.8 to 1.0
South East	0.8 to 1.0
South West	0.7 to 1.0



Somerset COVID-19 Local Outbreak Management Plan Dashboard - Hospital Activity

All COVID patients in Somerset Hospitals



Somerset COVID-19 Local Outbreak Management Plan Dashboard - Deaths

COVID deaths week ending

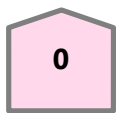
📅 05/11/2021

All COVID

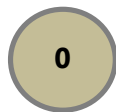
Hospital



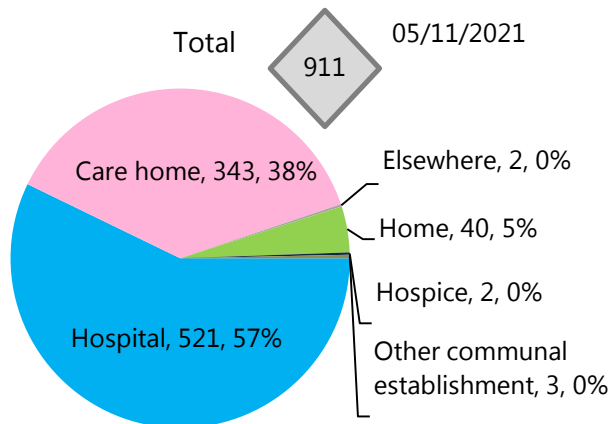
Care Home



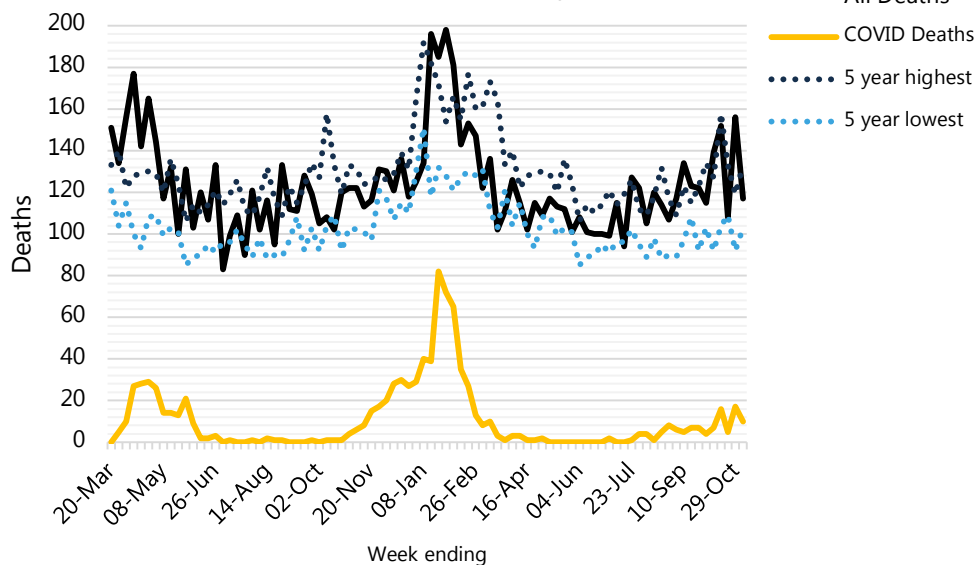
Other



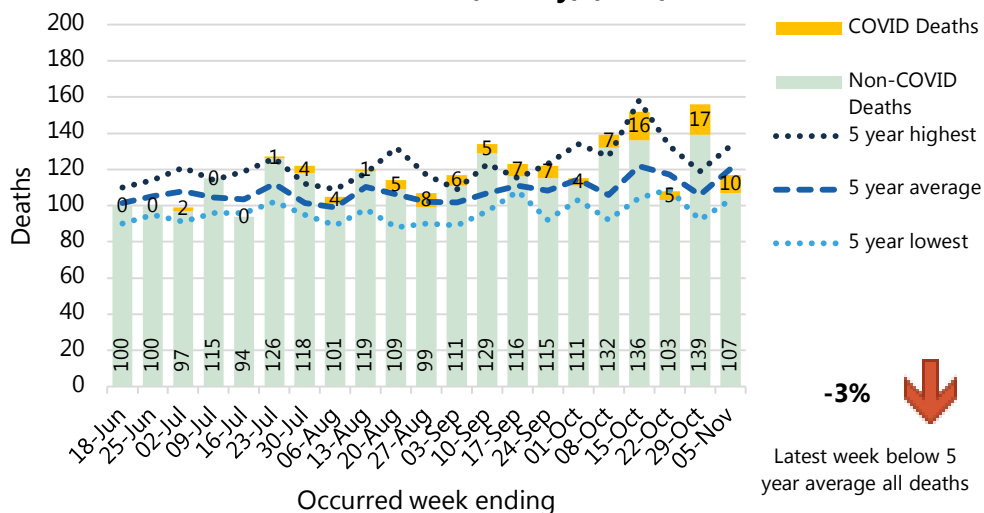
All COVID Deaths since the start of the pandemic in Somerset by Place of Death (ONS)



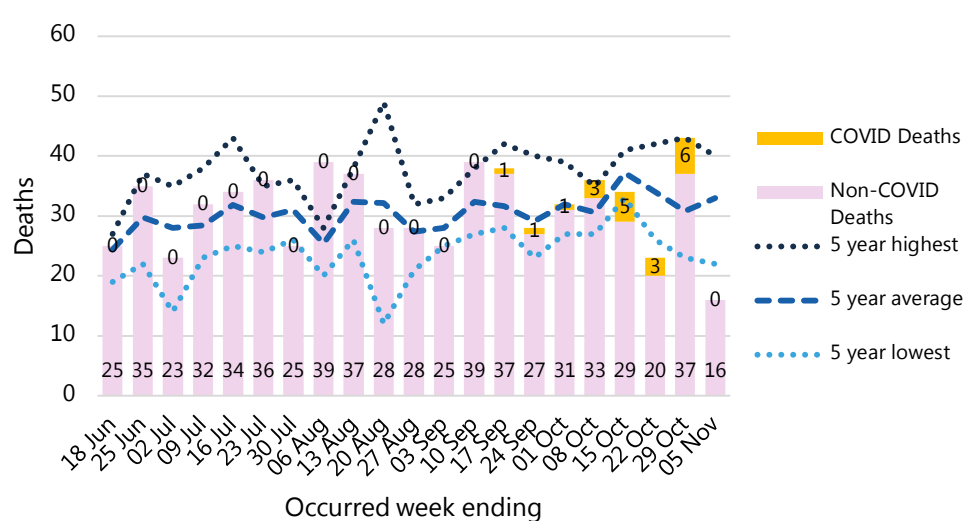
Somerset All Deaths (weekly) (ONS)



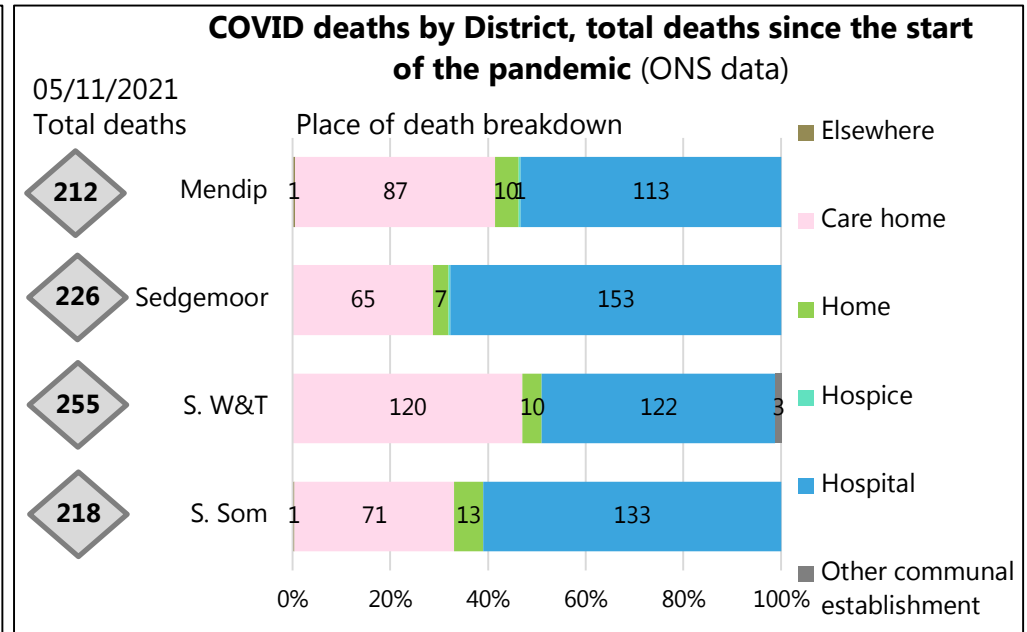
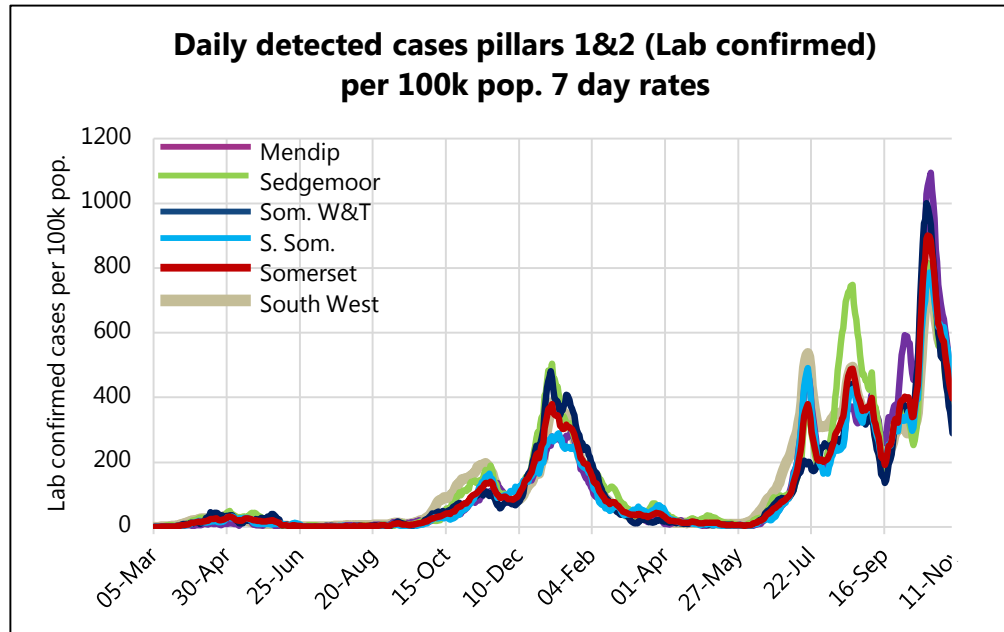
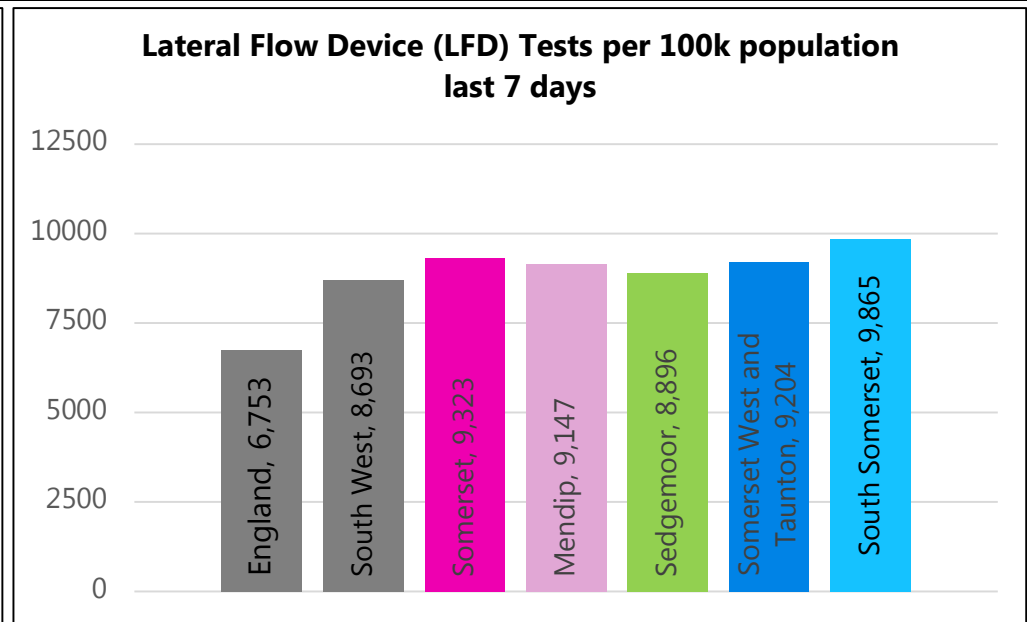
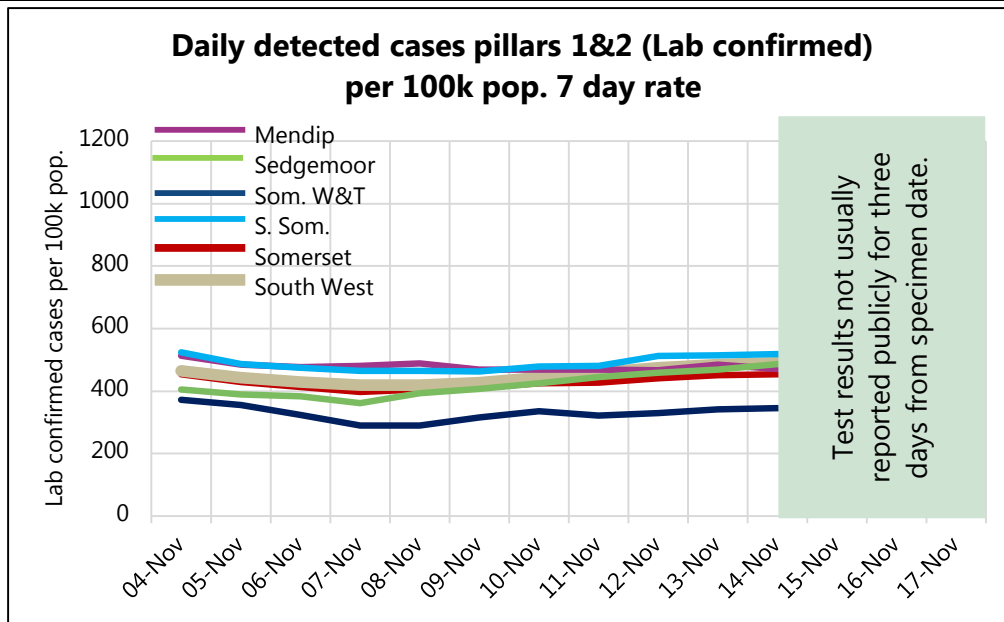
Somerset All Deaths (weekly) (ONS)



Somerset Care Home Deaths (weekly) (ONS)



Somerset COVID-19 Local Outbreak Management Plan Dashboard - District focus

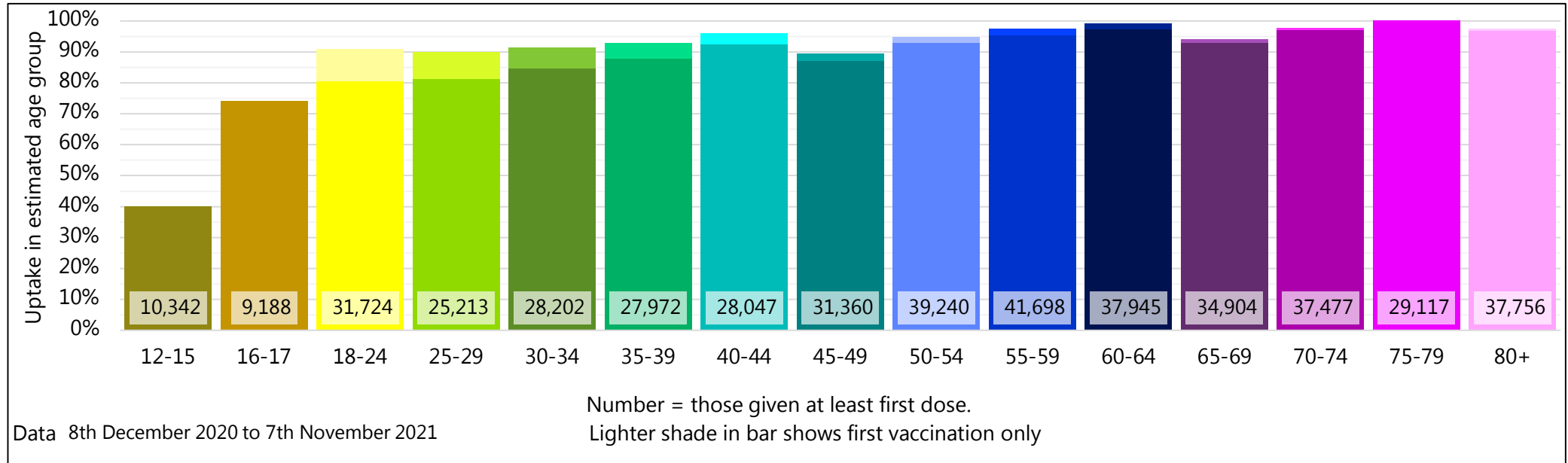


Somerset COVID-19 Local Outbreak Management Plan Dashboard - COVID Vaccinations

This page will be further developed once there is more routinely available data published nationally.

This vaccination data is NHS data, reported here with the agreement of the Somerset Clinical Commissioning Group. Specific queries regarding vaccination need to be directed towards the NHS. For more information on the local COVID-19 Vaccination Programme please see

[Covid-19 vaccinations in Somerset - Somerset CCG](#)



Population numbers are based on ONS 2020 estimates hence potential for uptake over 100%.

Percentage of 18+ population vaccinated at least once = 95.2%

Percentage of 18+ population vaccinated twice = 91.8%

Data for 12-15 year olds and 16-17 year olds is currently only being provided for the first dose.

Somerset COVID-19 Local Outbreak Management Plan Dashboard - Data

Data type	Next updated	How published	Link for more information
Lab confirmed cases: Pillars 1 & 2	18/11/2021	Published daily ~5pm with data to day before. By specimen date.	https://coronavirus.data.gov.uk/
Data by MSOA for the map	18/11/2021	Published daily. By specimen date.	None. Not publicly distributed. Data based on PHE reported cases. To note, this may differ slightly from data on the coronavirus.data.gov.uk website due to additional data cleaning by PHE.
R value from SAGE group	19/11/2021	Published weekly on Friday.	https://www.gov.uk/guidance/the-r-number-in-the-uk
Pillar 2 testing	23/11/2021	Published daily	https://coronavirus.data.gov.uk/
Death counts (ONS) County and district level	23/11/2021	Published weekly on Tuesday with data to the Friday 11 days before.	https://www.ons.gov.uk/peoplepopulationandcommunity/healthandsocialcare/causesofdeath/datasets/deathregistrationsandoccurrencesbylocalauthorityandhealthboard
Vaccination data	18/11/2021	Published weekly on Thursday with data to Sunday before.	https://www.england.nhs.uk/statistics/statistical-work-areas/covid-19-vaccinations/
Hospital Activity	18/11/2021	Published weekly on Thursday with data to Tuesday before.	https://www.england.nhs.uk/statistics/statistical-work-areas/covid-19-hospital-activity/

As of 2nd June 2020, numbers of lab-confirmed positive cases now include those identified by testing in all settings (pillars 1 and 2).

In January 2021, we changed the presentation of deaths data to be shown compared to the average and five year high and low deaths by date of occurrence rather than date of reporting. Deaths by date of reporting fluctuates more, especially when affected by bank holidays. Reporting by date of death does mean the latest week's figures are usually slightly incomplete when first reported due to delays in registrations of some deaths whereas the comparison years are more complete. For week 53 we have taken an average of 52 and week 1 comparison years.

Dashboard available at: <https://www.somerset.gov.uk/covid-19-dashboard/>