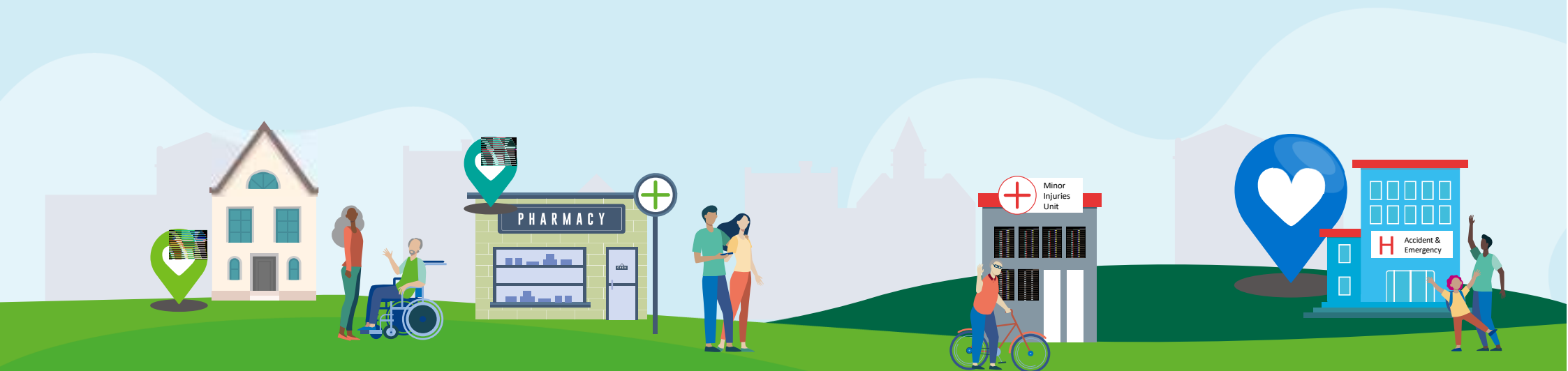


# Somerset Integrated Care System Governance and Decision Making



# Integrated Health and Care System Overview

Strategic leadership

## Somerset Board

### Health and Wellbeing Board

Established by the Local Authority. Provides shared leadership for the local health and wellbeing system, to improve health and reduce inequalities. The Board has responsibility over all influences of health and wellbeing including health and care services as well as the wider determinants of health. Underpinned by a joint health and wellbeing strategy, 'Improving Lives'.

### Integrated Care Partnership (ICP)

A committee jointly established by the ICB and the Local Authority. Responsible for developing and maintaining an integrated health and care strategy that meets the assessed needs of the Somerset population and are delivered by the ICB, Local Authority and NHS England.

### Health and Care Providers

### Integrated Care Board (ICB)

A Unitary Board. Responsible for arranging for the provision of health services for its population. Functions of ICB need to meet the assessed needs of the population, as informed by the ICP health and care strategy.

### Somerset Assurance Forum (SAF)

Operates as a single forum for the Somerset ICS (with NHSE) to obtain assurance against the System Oversight Framework (SOF) and system issues and performance.

### Somerset Collaboration Forum

A forum for system partners to collectively agree and oversee the strategic priorities, resulting from the Integrated Health and Care Strategy set by the ICP.

### ICB Committees

ICB committees with responsibility delegated by the ICB Board on specific matters.

### System Groups

Accountable to the Collaboration Forum, but report to the Somerset Assurance Forum on matters relating to performance. Some system groups are additionally hosted as committees of the ICB Board.

Delivery